

Table of Contents

Debugging with IGUANA Tutorial.....	1
Basic Concepts.....	1
Program Resource Consumption.....	1
Currently Loaded Shared Libraries.....	2
Available Iglets.....	2
State Tree.....	3
Very Verbose Output.....	4

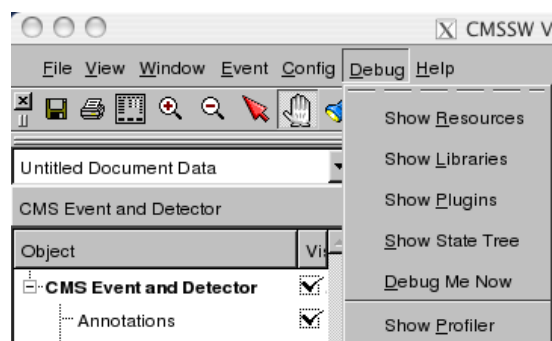
Debugging with IGUANA Tutorial

Complete:

Responsible: IannaOsborne

Basic Concepts

Debug pull down menu provides the following debugging information: the run-time program resource consumption, the list of currently loaded shared libraries, the list of available iglets, the Iguana state tree.



Program Resource Consumption

To display the program resource consumption: choose **Show Resources** menu item from **Debug** pull down menu. The program resource consumption window will pop up and will be updated automatically. It is also possible to refresh it manually by clicking on **Refresh** push button. The information can be saved as an ASCII file: click on **Save List** push button and type in a file name in the dialog.

Resource	Value	Units
CPU	3	
Involuntary context switches	30	
Major page faults	0	
Minor page faults	68545	
Priority ('nice' value)	0	
Priority (scheduling)	15	
Process state	R	
Resident set size	230690816 B	
Resident set size limit	4294967295 B	
Start time	783406850 msec	
Swaps	0	
System time	816 msec	
Timeout	20 msec	
Time until next interval alarm	0 msec	
User time	49709 msec	
Virtual memory data top	8049ae8	
Virtual memory dirty	0 B	
Virtual memory heap start	8049aec	
Virtual memory heap top	10a8e000	
Virtual memory kernel ip	4857a2	
Virtual memory kernel sp	bfe6db30	
Virtual memory libraries	188418048 B	
Virtual memory locked	0 B	

Buttons: Close, Refresh, Save List

Currently Loaded Shared Libraries

To display currently loaded shared libraries: choose **Show Libraries** menu item from **Debug** pull down menu. The currently loaded shared libraries window will pop up.

The list of currently loaded shared libraries can be sorted by the address: click on **Address** column title, by the component name: click on **Component** column title, or by the file name: click on **File Name** column title. To switch between ascending/descending order click on the same title again.

The information can be saved as an ASCII file: click on **Save List** push button and type in a file name in the dialog.

Address	Component	File Name
0x00000000	iguana	/afs/cern.ch/cms/sw/slc4_ia32_...
0x00000000	ld-linux.so.2	/lib/ld-linux.so.2
0x00000000	libcrypt.so.1	/lib/libcrypt.so.1
0x00000000	libc.so.6	/lib/tls/libc.so.6
0x00000000	libdl.so.2	/lib/libdl.so.2

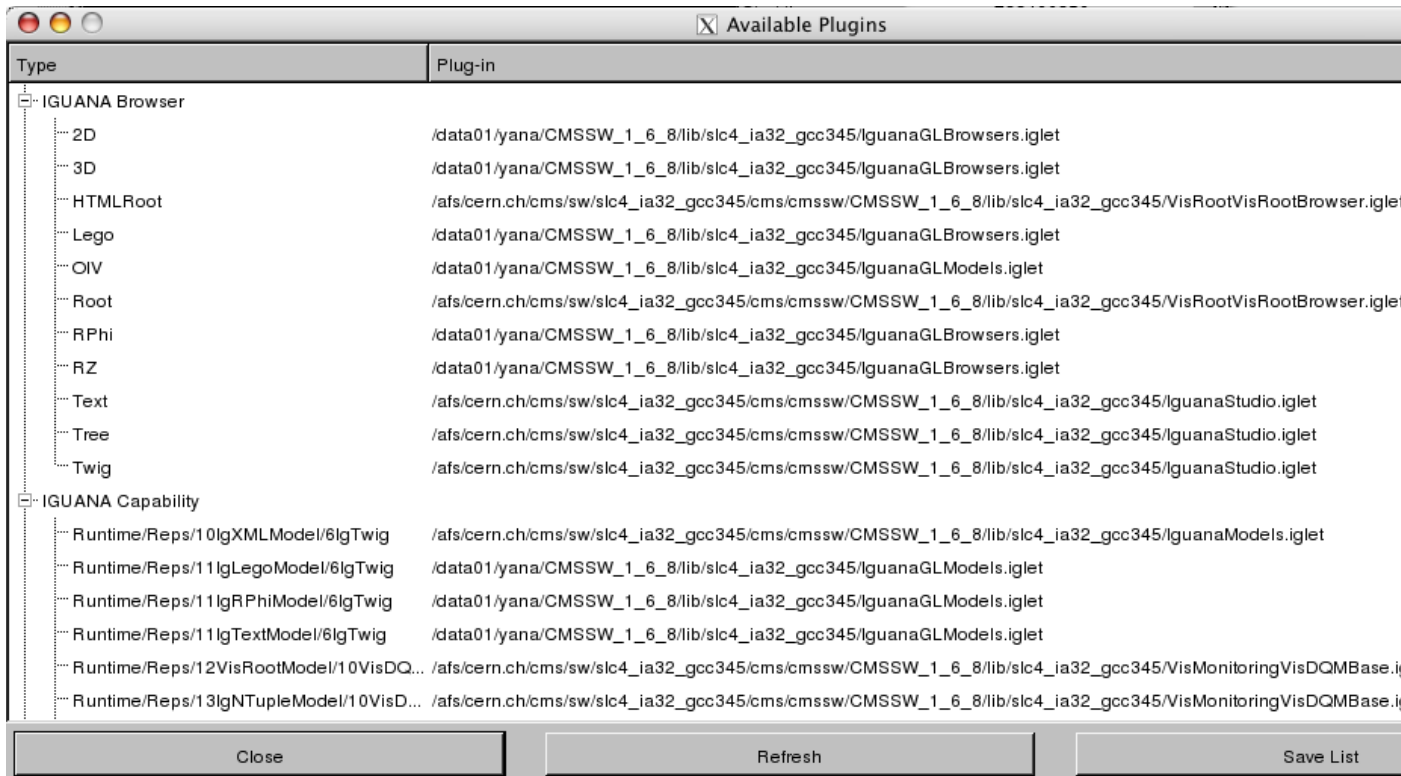
Buttons: Close, Refresh, Save List

Available Iglets

To display available iglets: choose **Show Plugins** menu item from **Debug** pull down menu. The available plugins window will pop up.

The tick mark indicates that an iglet is loaded.

The information can be saved as an ASCII file: click on **Save List** push button and type in a file name in the dialog.



State Tree

This information is needed for experts only.



Very Verbose Output

If a very verbose output is desired, run Iguana as follows:

```
> env LOG=stderr iguana your.cfg
```

-- IannaOsborne - 16 Jan 2008

This topic: CMSPublic > SWGuideVisDebugTutorial

Topic revision: r2 - 2011-12-16 - IannaOsborne



Copyright &© 2008-2019 by the contributing authors. All material on this collaboration platform is the property of the contributing authors.

Ideas, requests, problems regarding TWiki? Send feedback