

Table of Contents

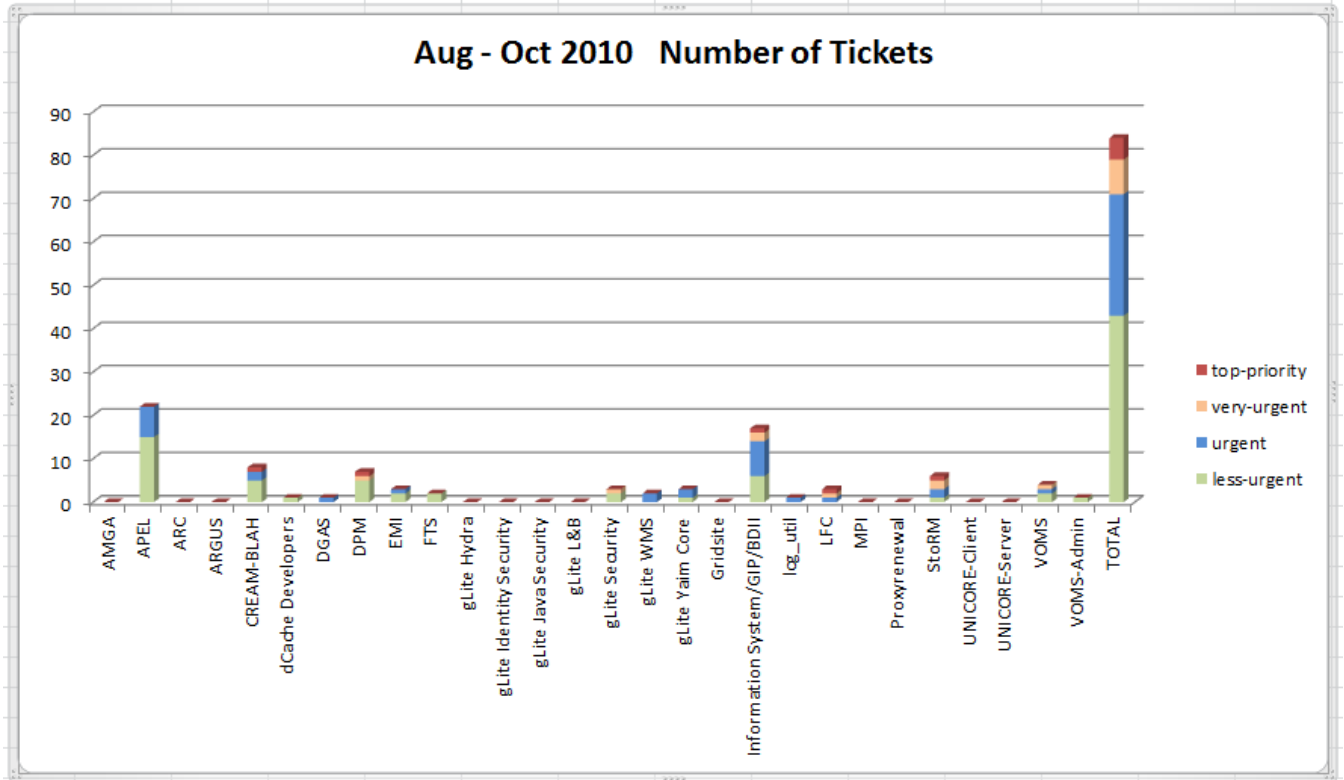
KSA1.1 Number of incidents.....	1
Year 1.....	1
Year 2.....	3

KSA1.1 Number of incidents

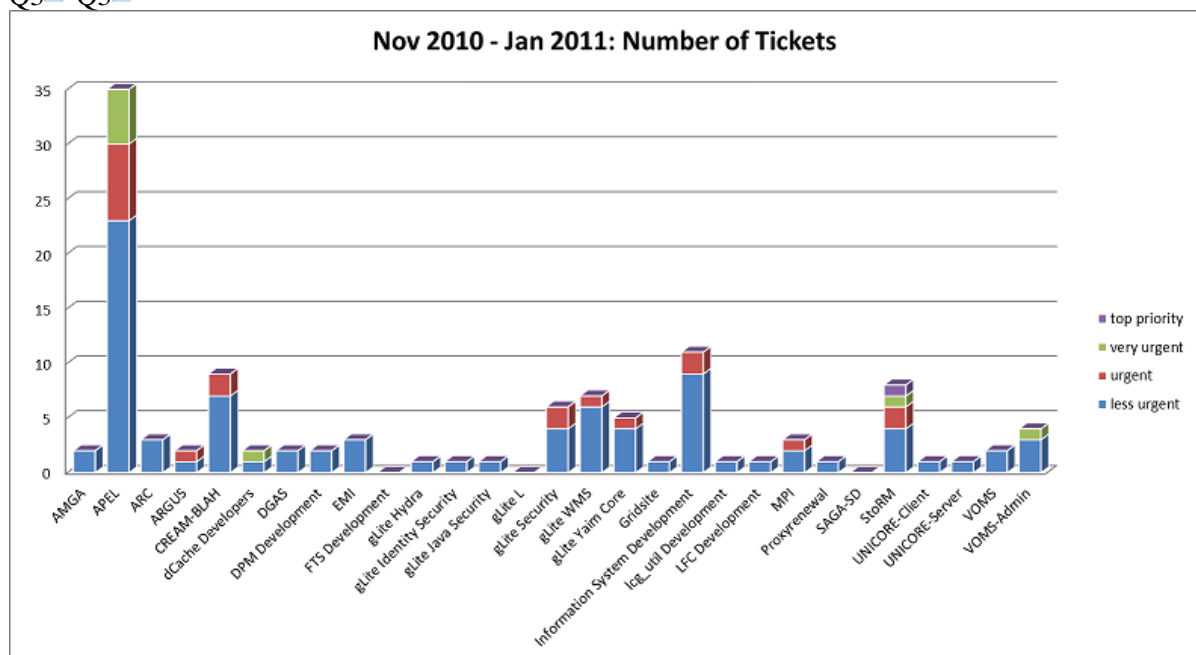
Year 1

Q1: Not reported

Q2 ▾ Q2 ▾



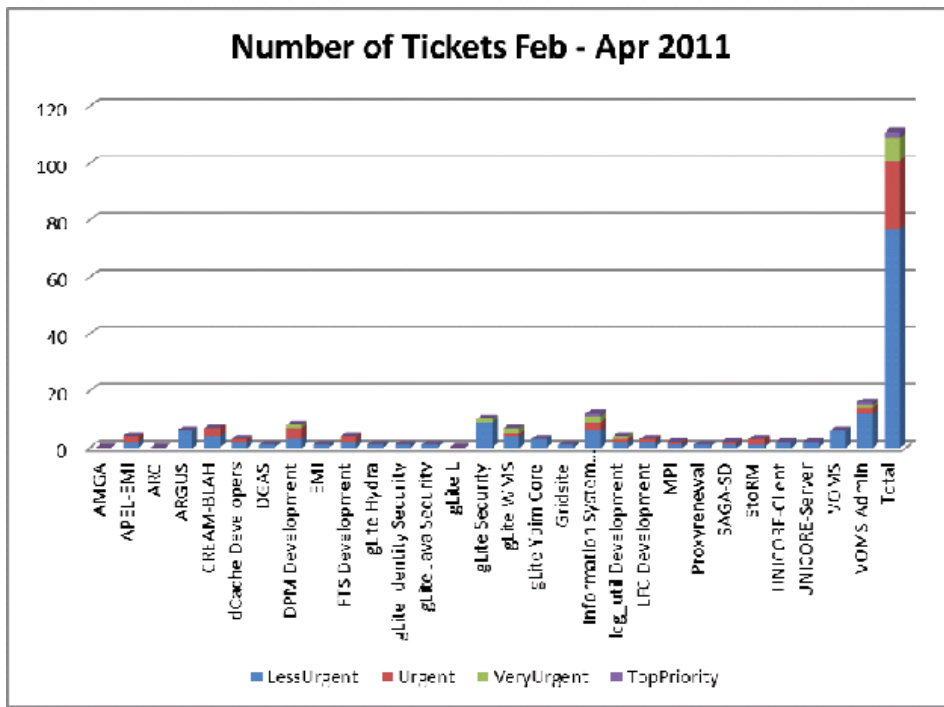
Q3 ▾ Q3 ▾



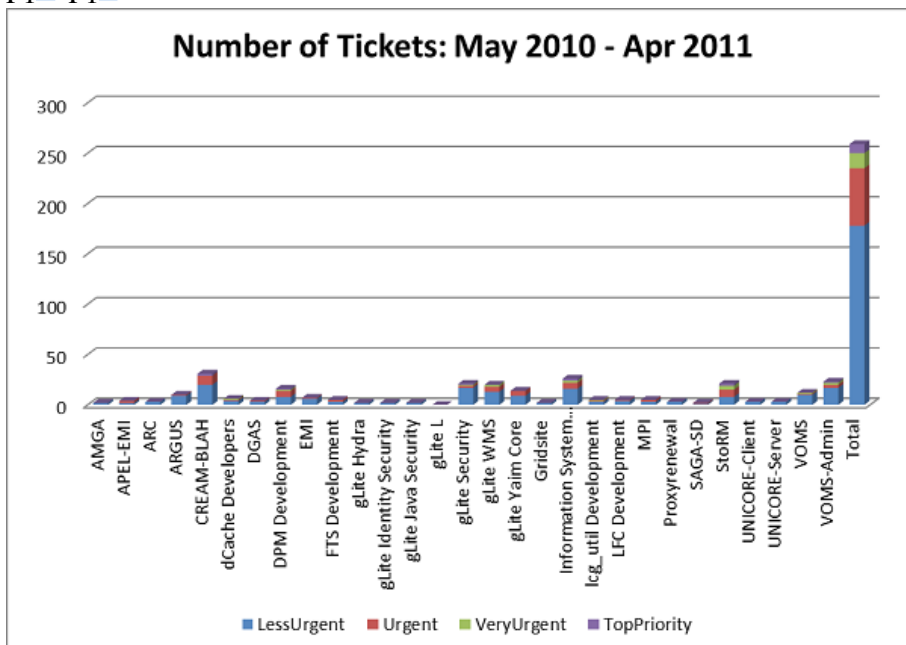
NB:

APEL: There were 2 tickets with APEL client bugs for the last quarter. The rest were operational issues or clarification with the migration from MON to glite-APEL.

Q4 ▾ Q4 ▾

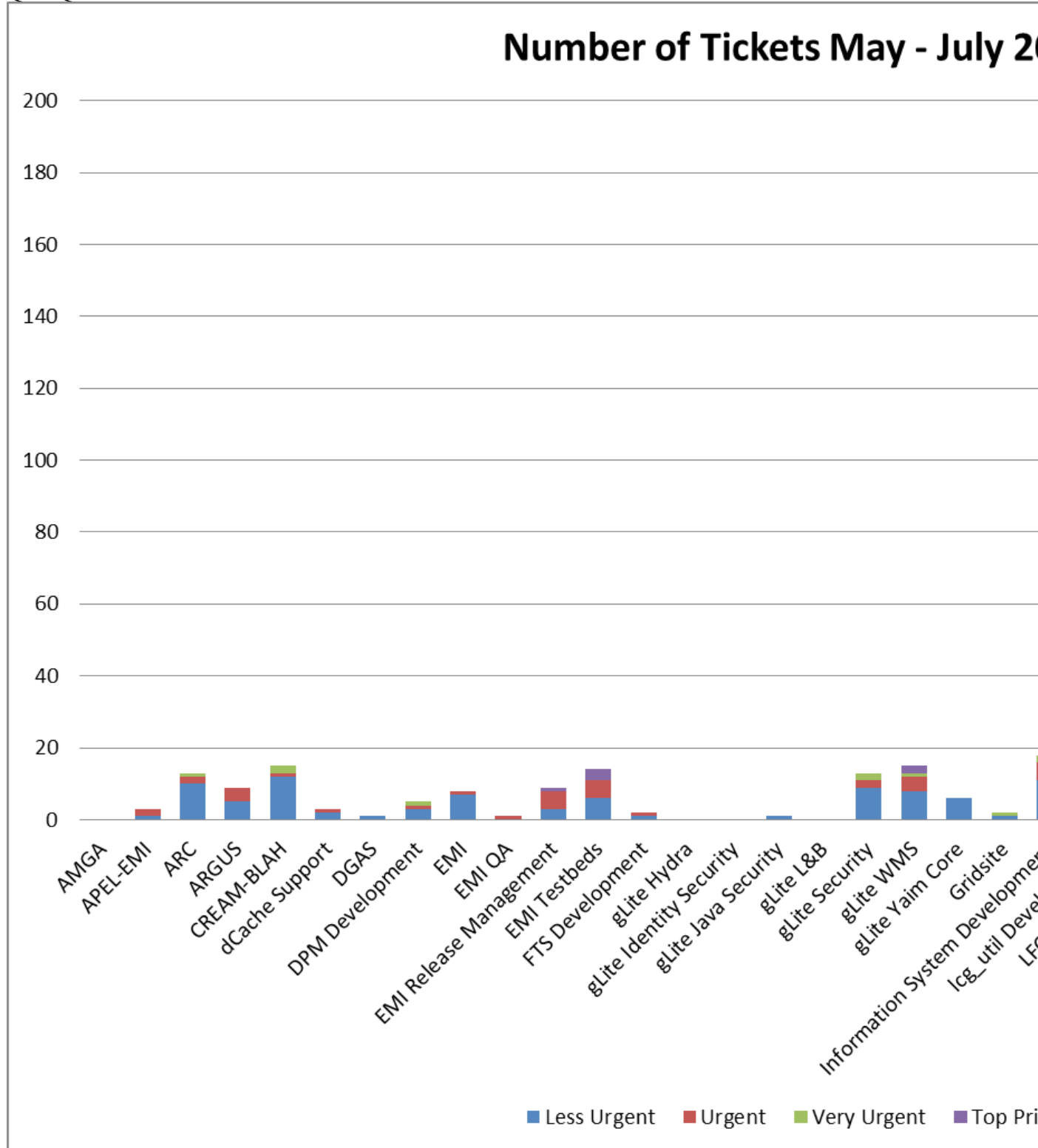


P1 ▾ P1 ▾



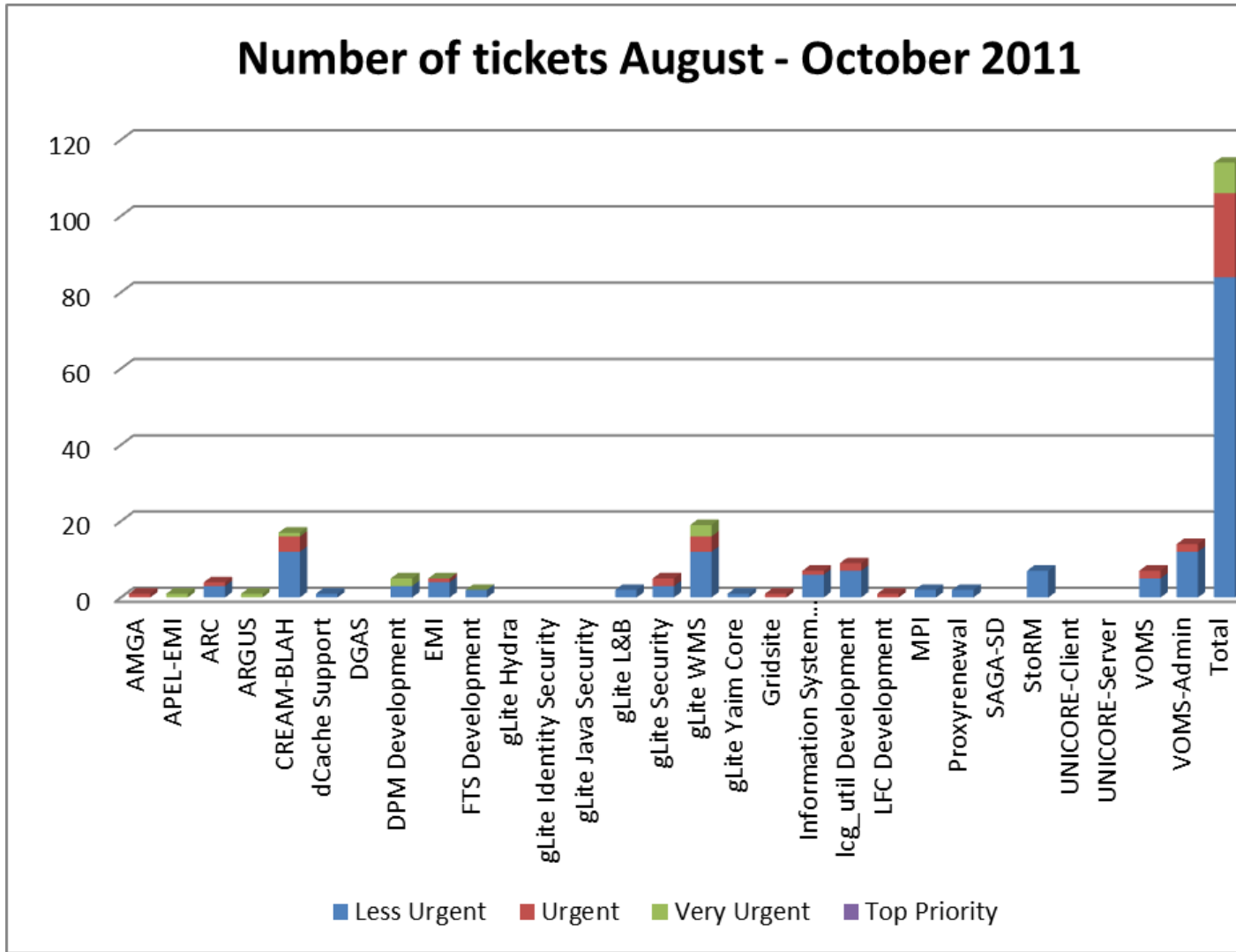
Year 2

Q5 ▾ Q5 ▾



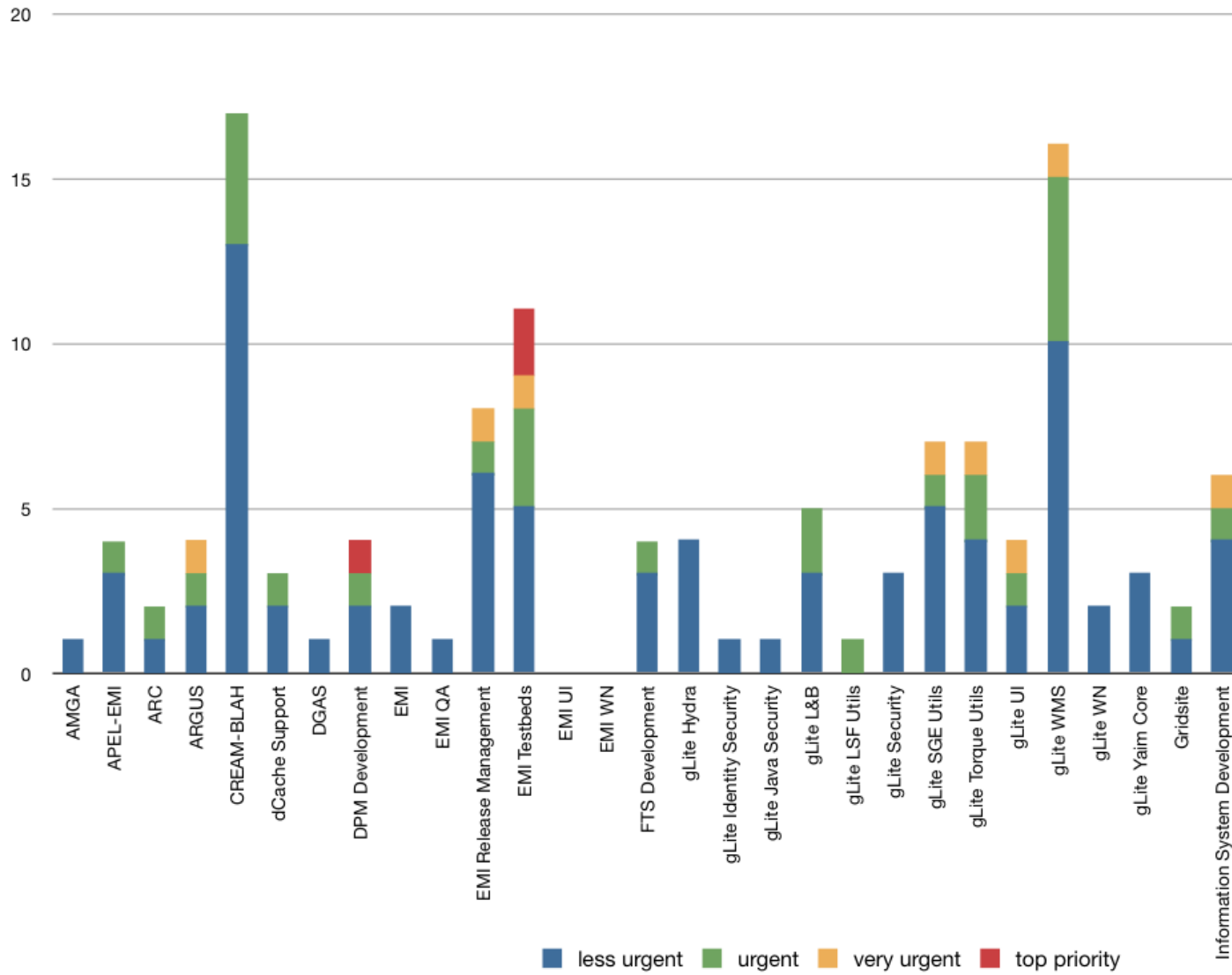
Q6 ▾ Q6 ▾

Number of tickets August - October 2011

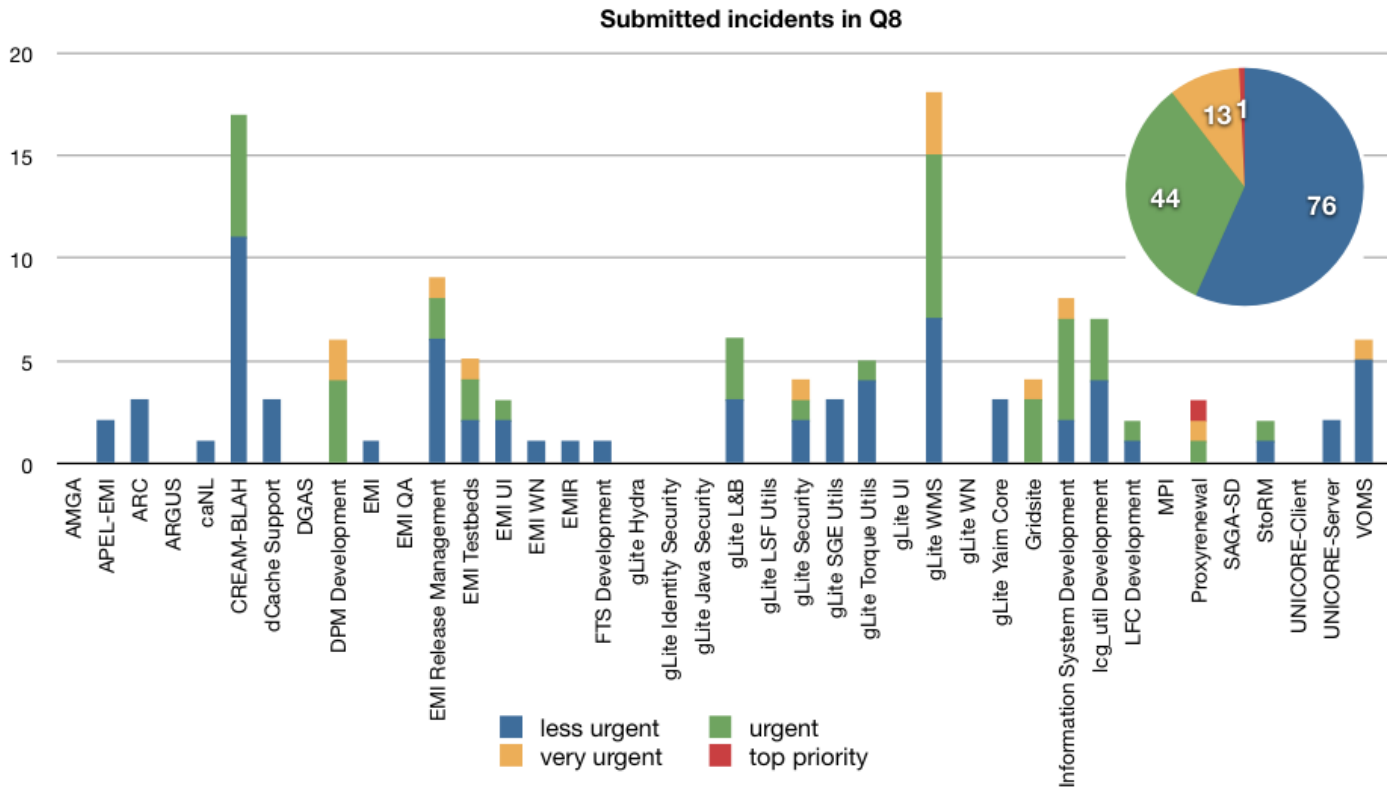


Q7 Q7

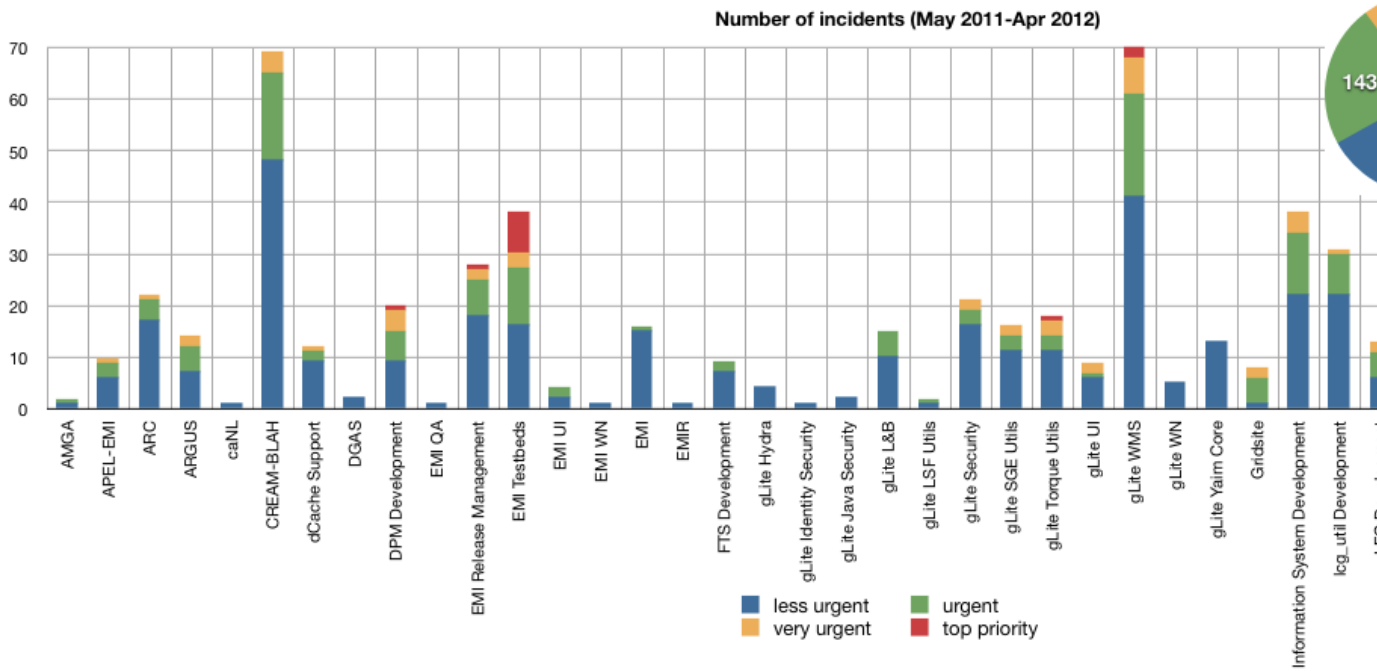
Submitted tickets in Q7



Q8 Q8



P2 ▾ P2 ▾



-- FloridaEstrella - 02-Mar-2011

This topic: EMI > EmiKpiKSA11
 Topic revision: r6 - 2012-05-29 - unknown



Copyright &© 2008-2022 by the contributing authors. All material on this collaboration platform is the property of the contributing authors.
 or Ideas, requests, problems regarding TWiki? use Discourse or Send feedback