

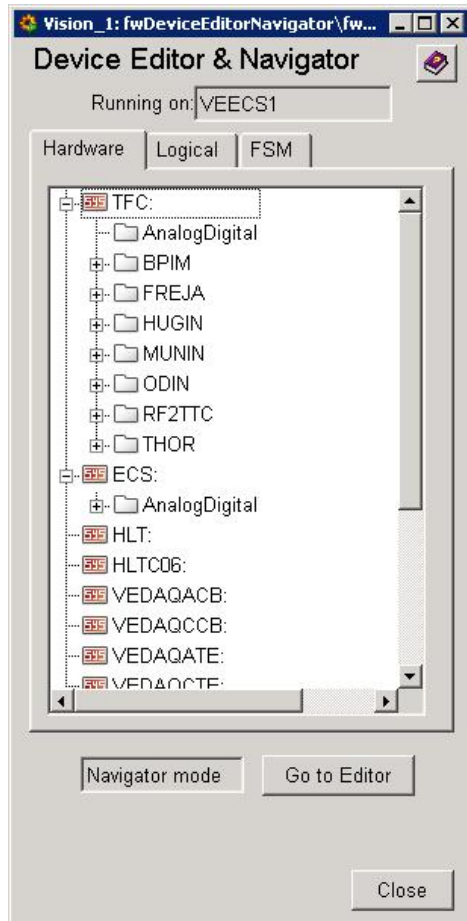
# Table of Contents

<b>DAQ Troubleshooting.....</b>	<b>1</b>
The DAQ is DEAD!.....	1
When I configure, the DAQ goes in ERROR!.....	3
How do I restart the Specs Server?.....	4
How do I re-subscribe the hardware to the Specs Server?.....	5

# DAQ Troubleshooting

## The DAQ is DEAD!

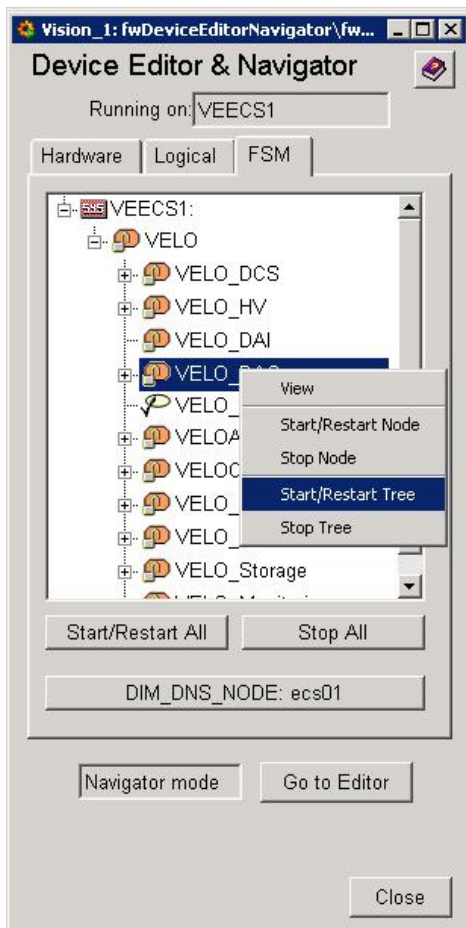
- Log on to a Windows console in the online network (LHCb domain).
- Open the following directory: G:\online\ecs\Shortcuts\VELO
- Double click on VEECS1\_UI\_DEN. The following panel will pop up:



- Click on the FSM tab:

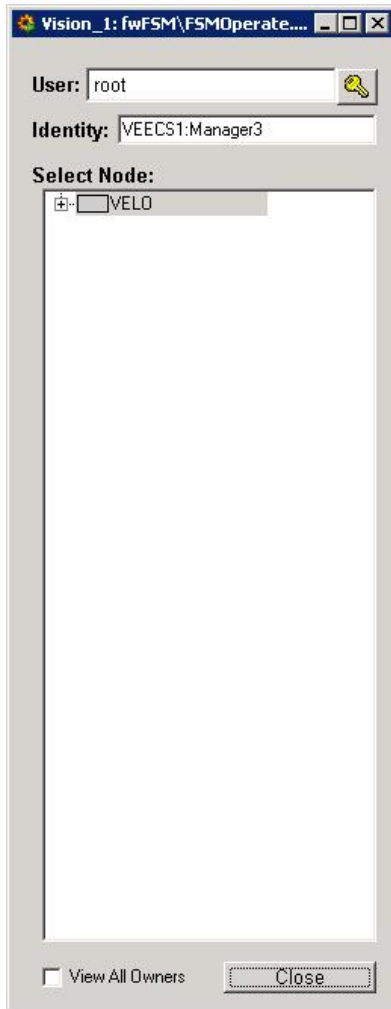


- Expand the hierarchy: VEECS1>>VELO, right-click on VELO\_DAQ and choose "Start/Restart tree":



## When I configure, the DAQ goes in ERROR!

- **Make sure that the corresponding LV channels are READY.** If not follow the instructions on the Low Voltage System.
- Log on to a Windows console in the online network (LHCb domain).
- Open the following directory: G:\online\ecs\Shortcuts\VELO
- Double click on VEECS1\_UI\_FSM. The following panel will pop up:



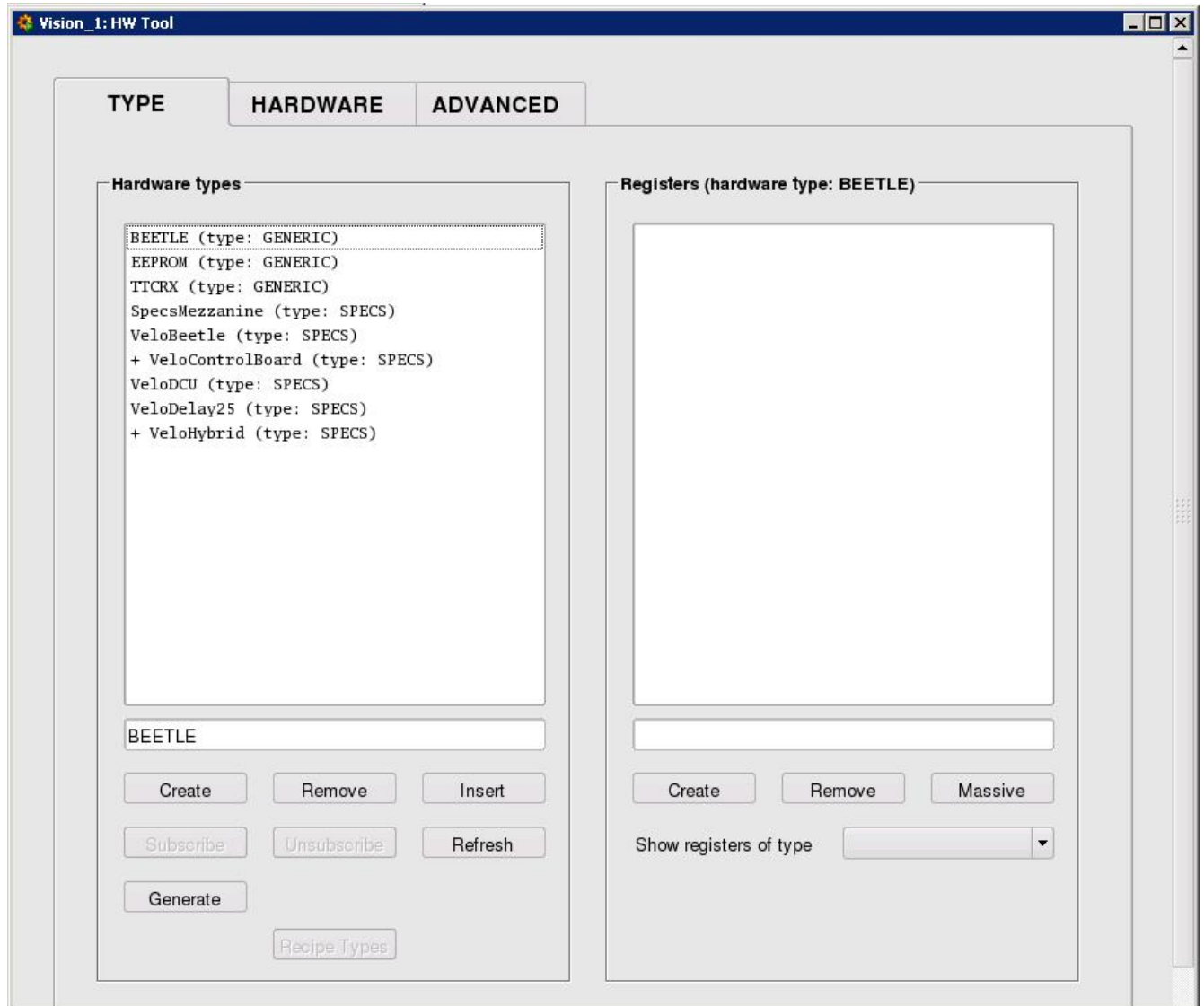
- Right click on VELO to get the VELO ECS top panel. In this panel you find the list of sub-systems: if the VELO\_DAQ sub-system is not included, click on the corresponding padlock and choose take.
- Click on VELO\_DAQ --> VELOA(C)\_DAQ to get the DAQ panel for the selected half. If the VELOA(C)\_DAQ sub-system is not included, click on the corresponding padlock and choose take.
- Check which one of the listed Control Unit is in error.
- Only the VELOA(C)\_DAQ\_TE system is in ERROR: please consult the Tell1 troubleshooting.
- The VELOA(C)\_DAQ\_CB and/or one of the VELOA\_DAQ\_M# are in ERROR: please check that the Specs Server and the DNS node are still running: click on one of the Velo Module (one of the coloured buttons on the right side of the panel) and check that the specs node (vedaqa(c)01) and the DNS node (ecs01) are both green.
- The specs node is red: you have to restart the specs server.
- The DNS node is red: contact the Online experts.
- The Specs Server and the DNS node are both green: try to re-subscribe the hardware to the Specs Server.

## How do I restart the Specs Server?

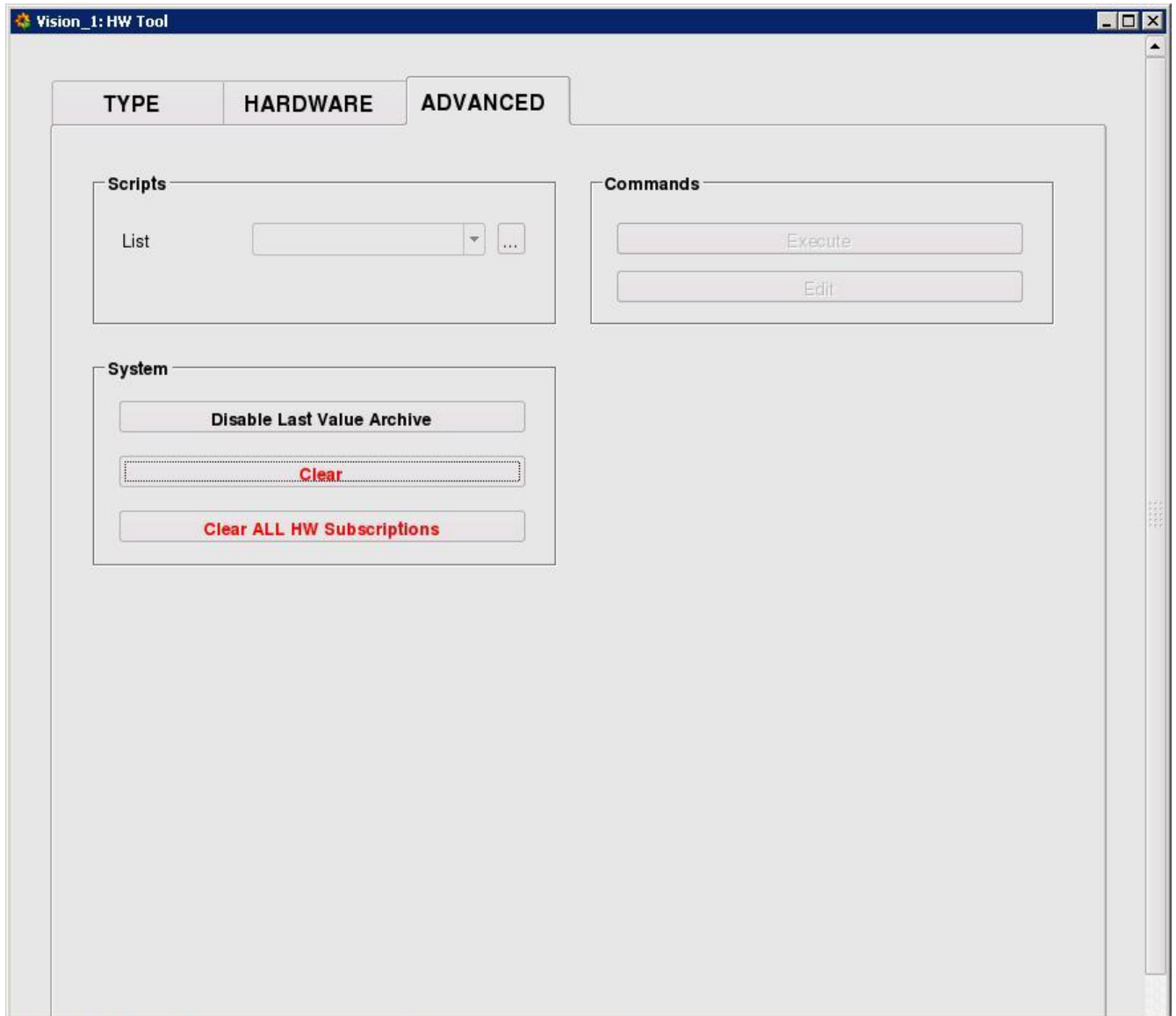
- Log on to a Windows console in the online network (LHCb domain).
- Start Exceed.
- Start putty and log on vedaqa(c)01.
- Browse to /group/velo/pvss/fwComponents\_VEDAQA(C)CB/bin/
- Run ./Dns
- Run ./SpecsServer

## How do I re-subscribe the hardware to the Specs Server?

- Log on to a Windows console in the online network (LHCb domain).
- Start Exceed.
- Start putty and log on vedaqa(c)01.
- Browse to /group/velo/pvss/localManagers/VEDAQA(C)CB/
- Run ./Hw.sh
- The following panel will pop-up:



- Go to the ADVANCED tab and click on "Clear ALL HW Subscriptions":



- Go back to the TYPE tab.
- Select the VeloControlBoard and click on "Subscribe"; a panel will pop-up asking if you want to subscribe all the registers of hardwares of type VeloControlBoard: say yes.
- Select the VeloHybrid and click on "Subscribe"; a panel will pop-up asking if you want to subscribe all the registers of hardwares of type VeloHybrid: say yes.

-- StefanoDeCapua - 08 Aug 2008

This topic: LHCb > DAQtroubleshooting

Topic revision: r2 - 2008-08-11 - StefanoDeCapua



Copyright &© 2008-2019 by the contributing authors. All material on this collaboration platform is the property of the contributing authors.

Ideas, requests, problems regarding TWiki? Send feedback