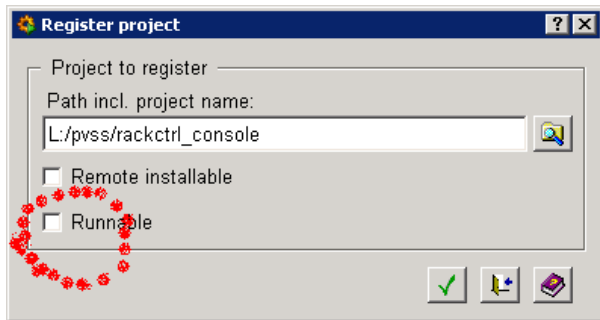


Rack Control Using PVSS:

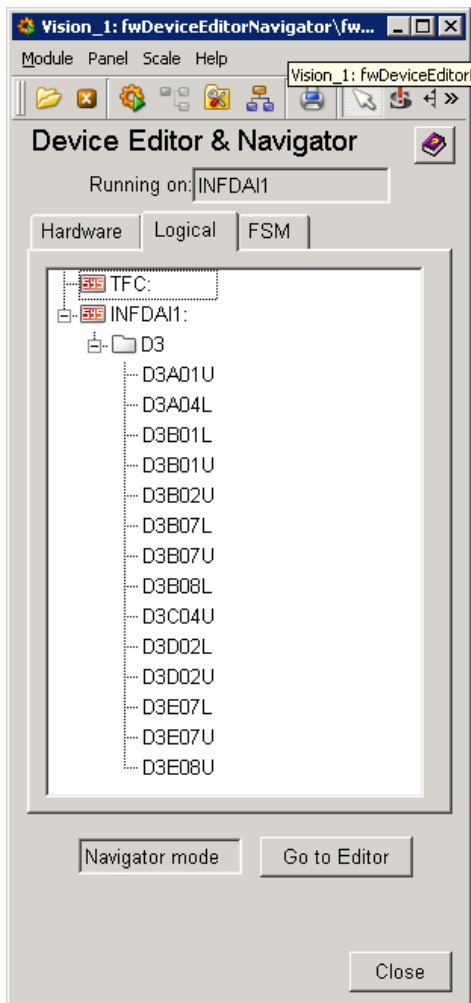
You can use PVSS to connect to the control PC which handles the real hardware, and control everything.

Windows:

- Copy directory **G:\online\rackctrl\console\rackctrl_console** to **L:\pvss**
- Copy shortcut **G:\online\rackctrl\rackctrl.win.lnk** to anywhere you want to run the rackcontrol component. (e.g. put it to L:\pvss)
- Register **L:\pvss\rackctrl_console** on your local machine, make sure to **uncheck "Runnable"** option.



- Then you can double-clicked the shortcut "**rackctrl.win.lnk**" to run the components. There will be a "**Device Navigator**" panel, you can open **Logical View**, and control your crates.



- Note: This rackctrl_console project is not runnable, so you can open as many panels as you want.

Linux:

- execute shell script `"/group/online/rackctrl/cpproj.linux dstpath"` to copy project files, if no dstpath is specified, project will copy to ~/pvss
- register this project, make sure to **uncheck "Runnable"** option.
- you can run `dstpath/rackctrl.linux.lnk` to run the **DeviceEditor** panel now 😊 please use **Logical View** to control your crates.
- The script `cpproj.linux` will automatically update the path in the config file.

Rack Control Using "rackctrl" under Linux:

- copy file `/group/online/rackctrl/rackctrl` to your own machine where there is DIM installed.
- run `rackctrl` for help
- run `rackctrl list` to get a list of current crates
- run `rackctrl status` to get status of all available crates
- run `rackctrl update` to update the dim service(restart)
- run `rackctrl start crate` to turn on specific crate
- run `rackctrl stop crate` to turn off specific crate
- run `rackctrl reset crate` to reset VME bus of specific crate
- A simple authentication mechanism is added to this applet, it will get your effective uid as your fingerprint, and prevent you from operating wrong crates by mistake.(only the specific group user can turn on/off/reset their crates)

```

kaikuo@ttdaq01:-
D3/D3E07L is Off
D3/D3E07U is Off
D3/D3E08U is On
[ttdaq01] /home/kaikuo > rackctrl status
B1/B1B01L is Off
B1/B1B01U is On
B1/B1C01U is On
D3/D3A01U is Down
D3/D3A04L is Off
D3/D3B01L is On
D3/D3B01U is On
D3/D3B02U is On
D3/D3B07L is On
D3/D3B07U is On
D3/D3B08L is On
D3/D3B09U is Off
D3/D3C04U is Off
D3/D3D02L is On
D3/D3D02U is On
D3/D3E04U is On
D3/D3E07L is Off
D3/D3E07U is Off
D3/D3E08U is On
[ttdaq01] /home/kaikuo >

```

Example

-- KaikuoZHUO - 02 May 2007

This topic: LHCb > RackControl

Topic revision: r6 - 2007-06-06 - KaikuoZHUO



Copyright &© 2008-2019 by the contributing authors. All material on this collaboration platform is the property of the contributing authors.

Windows:

Ideas, requests, problems regarding TWiki? Send feedback