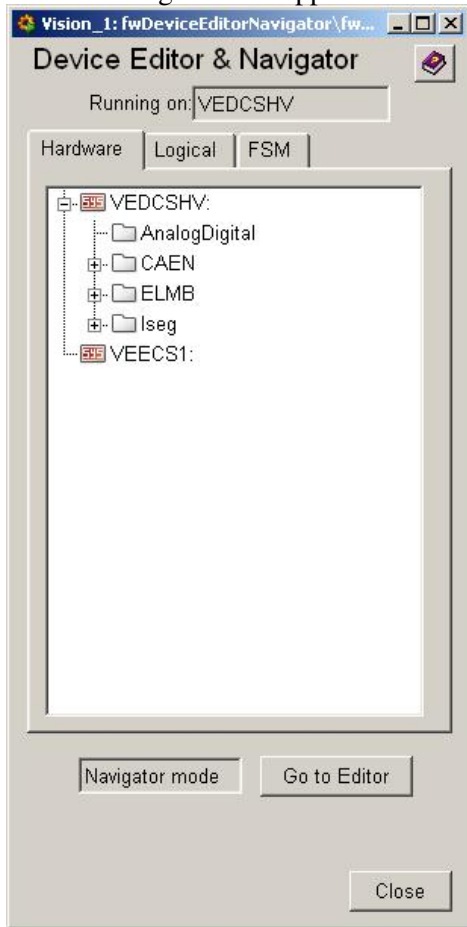
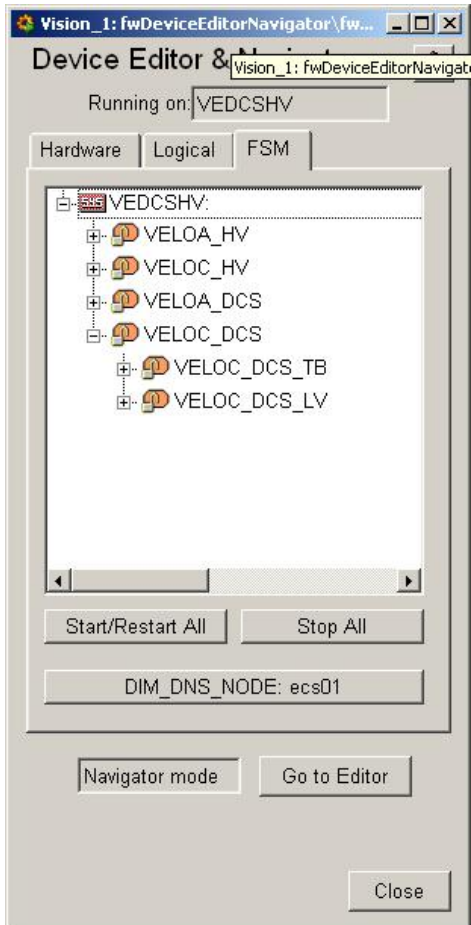


## Restarting the FSM

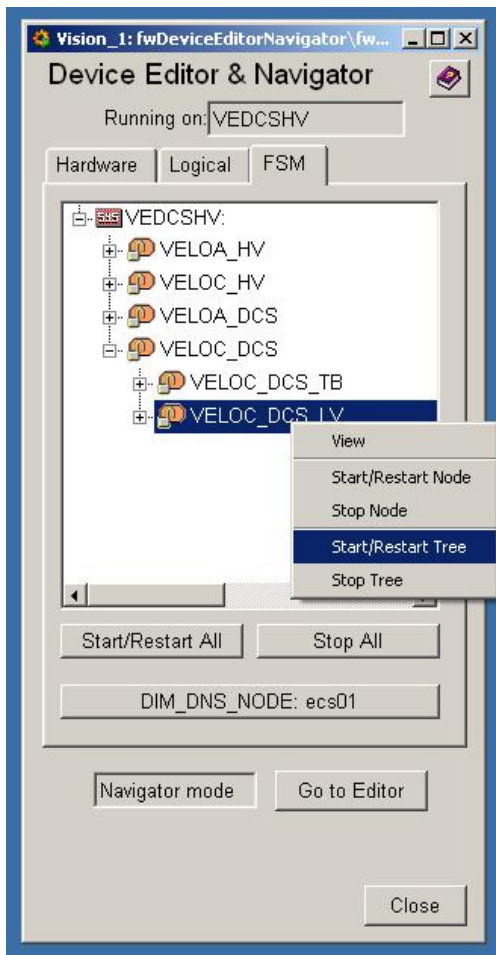
1. Log on to windows terminal in the online network.
2. Open the directory G:\online\ecs\Shortcuts\VELO
3. Double click on VEDCSHV\_UI\_DEN
4. The following window appears:



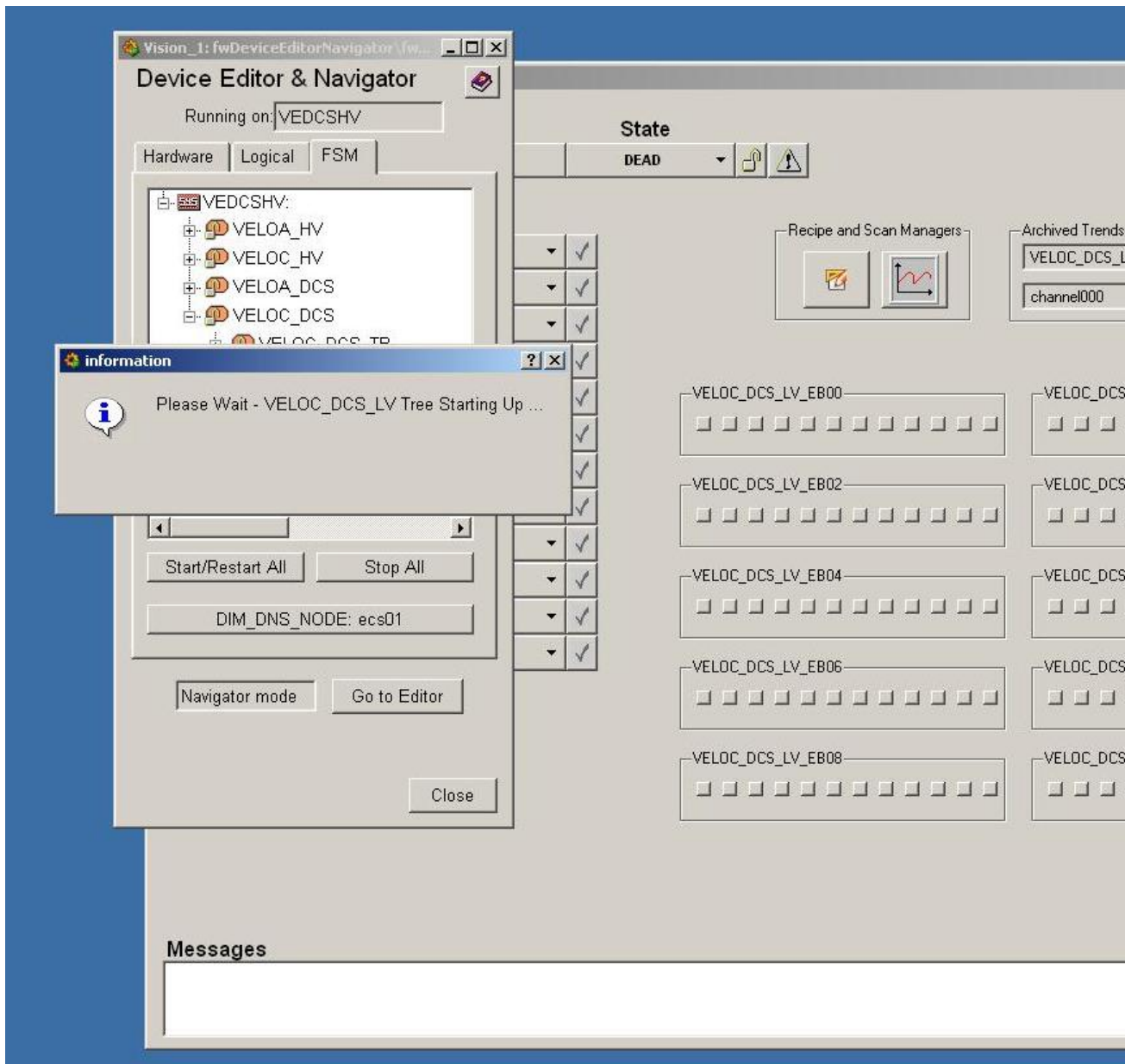
5. Click on the FSM tab and expand the VELOC\_DCS:



6. Right click on VELOC\_DCS\_LV
7. Move cursor over Start/Restart tree



8. Left click mouse or press enter.



9. VELOC\_DCS\_LV state should be NOT\_READY.

## Problem restarting the FSM

Is the DIM\_DNS server overloaded.

1. Log onto vedcs01w
2. Open the PVSS console
3. Look at the processes which are running.
4. PVSS00dim should be next to a green box containing the number 2.

-- MarkTobin - 02 Apr 2008

---

This topic: LHCb > VELOLVRestartFSM  
 Topic revision: r3 - 2008-08-25 - MarkTobin



Copyright &© 2008-2019 by the contributing authors. All material on this collaboration platform is the property of the contributing authors.  
Ideas, requests, problems regarding TWiki? Send feedback