

Table of Contents

Data used in the analysis.....	1
# of events in the analysis.....	2
Energy distribution.....	3
Energy distribution in EMCal trigger.....	3
Comparison Max tower Energy and All cluster in EMCal trigger.....	3
Comparison between EMCal trigger (Central) and Central trigege.....	4
E/p.....	5
Central trigger.....	5
E/p peak position & resolution.....	5
Fit with Gaussian + exponential.....	5
Fit with Gaussian with around E/p peak position.....	6
Raw Electron yields.....	7
Central trigger (uncorrected background).....	7
.....	8
presentations.....	9

Data used in the analysis

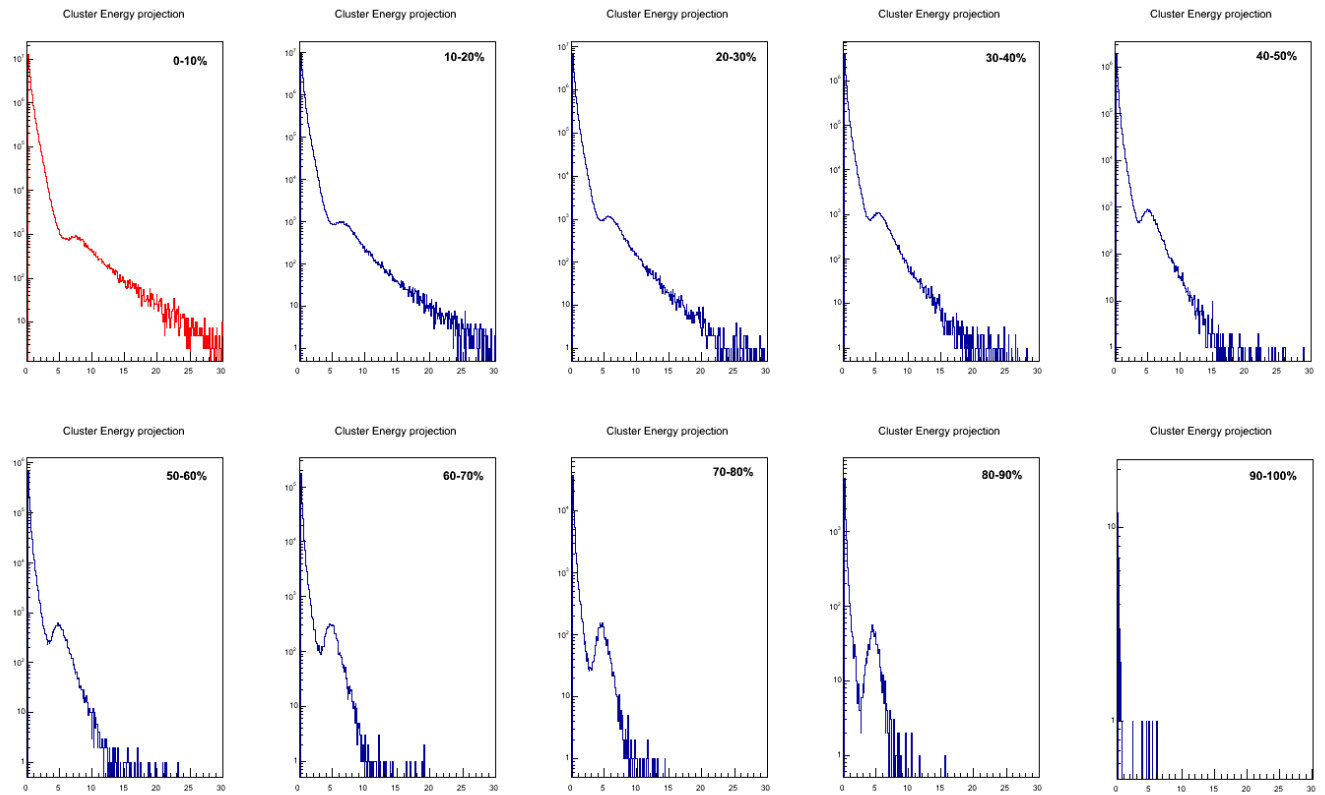
168318 168341 168362 168461 168826 169045
168322 168356 168458 168514 169035 169091
168325 168361 168460 168777 169040 169099

of events in the analysis

- EMCal trigger (all the centrality) ; 250,000
- Central trigger ; 2,000,000

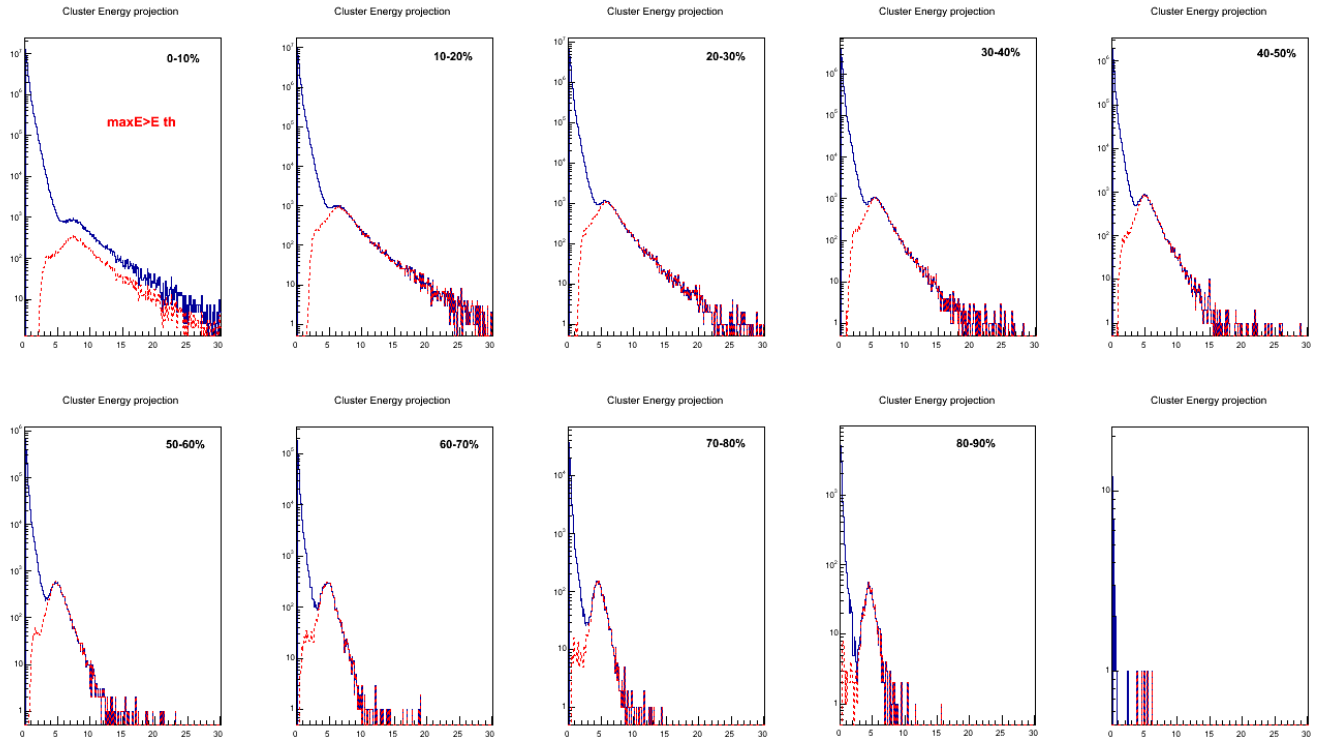
Energy distribution

Energy distribution in EMCal trigger



- (action) Check exotic cluster

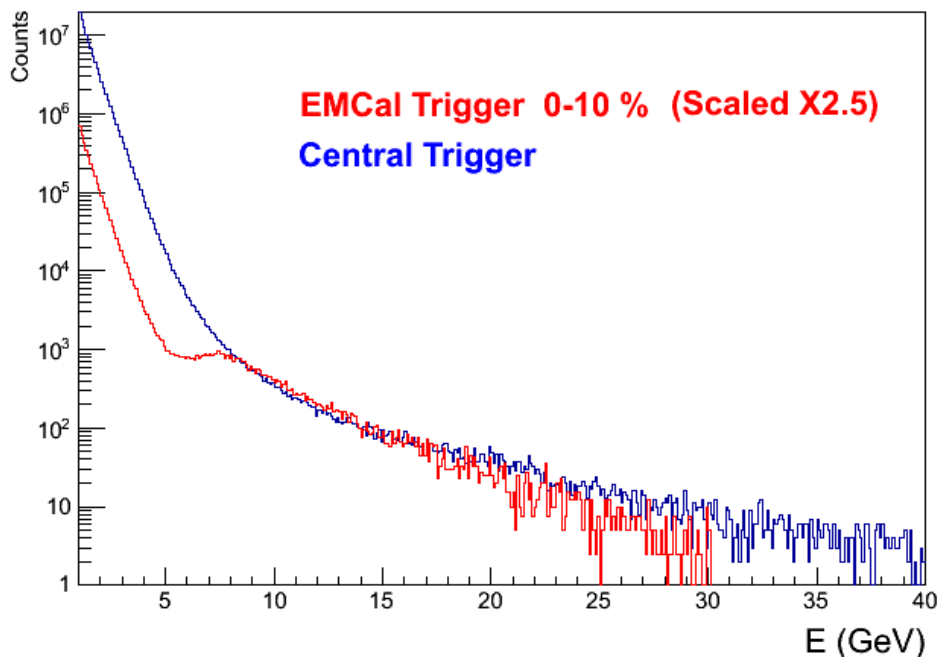
Comparison Max tower Energy and All cluster in EMCal trigger



- Maximum tower energy distribution is identical with cluster energy distribution without any trigger cluster selection above the threshold.
- In most central, these distributions are different above the threshold

Comparison between EMCal trigger (Central) and Central trigger

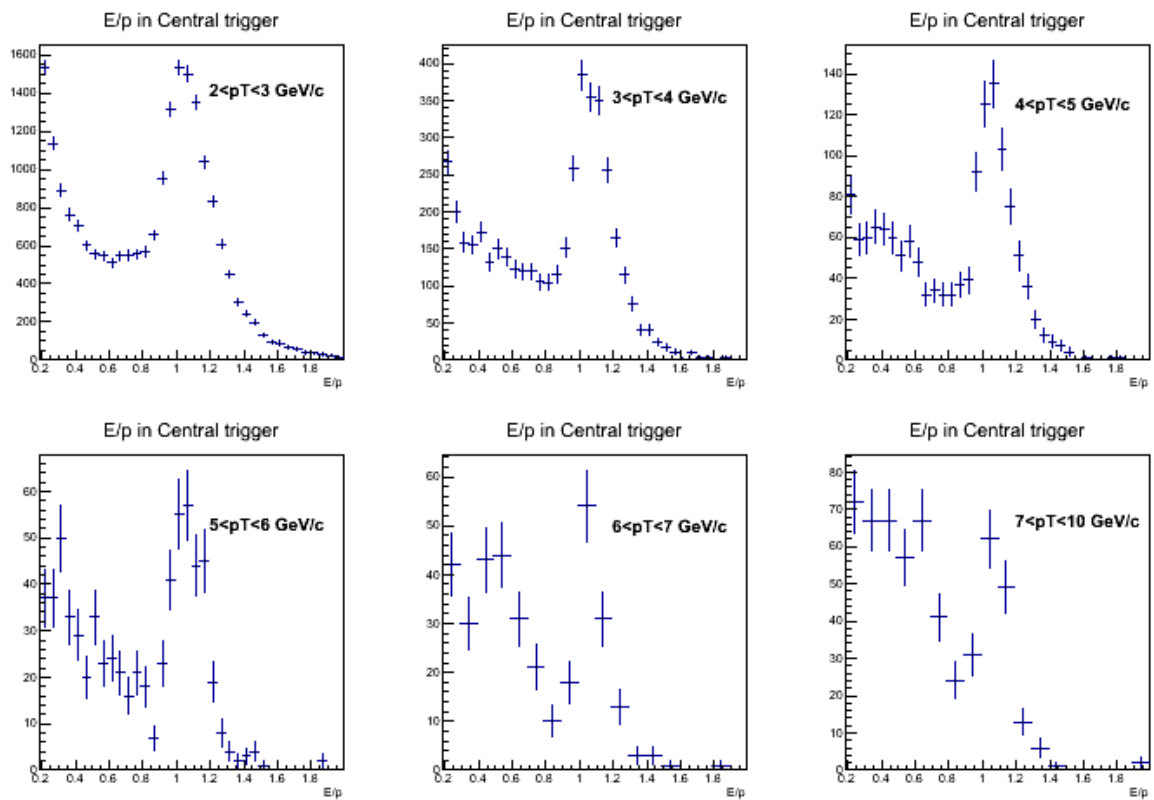
Cluster Energy Comparison between EMC trig (0-10) and Central



- Cluster energy distribution with the EMCal trigger in the most central (0-10%) is well match with the distribution with the central trigger after arbitrary scale above the threshold.

E/p

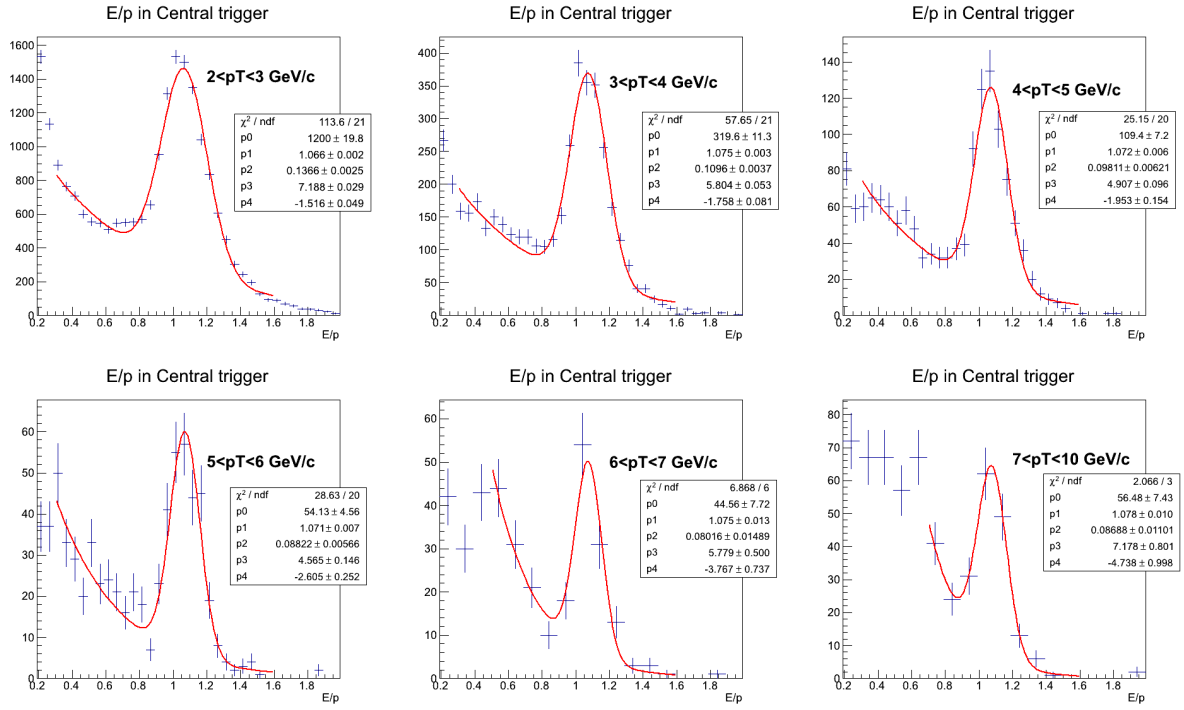
Central trigger



- Large hadron contamination at low p_T due to dE/dx selection. Need to check.
- (action) first fit the narrow gauss to find peak and width

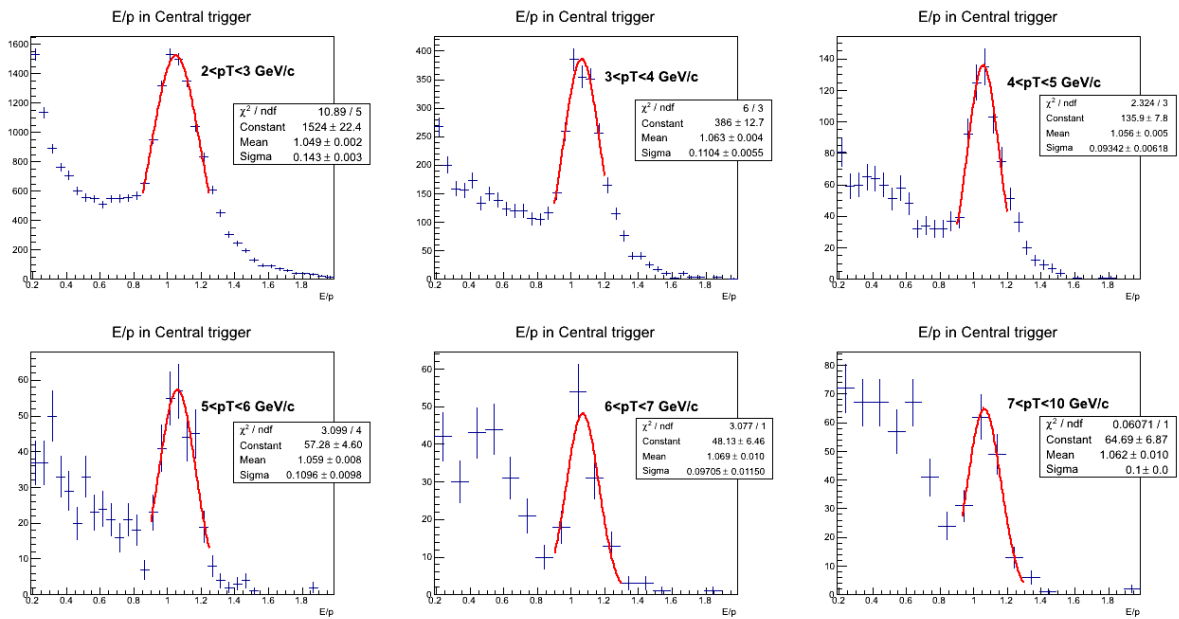
E/p peak position & resolution

Fit with Gaussian + exponential



- peak position ; ~ 7 % higher than unit

Fit with Gaussian with around E/p peak position

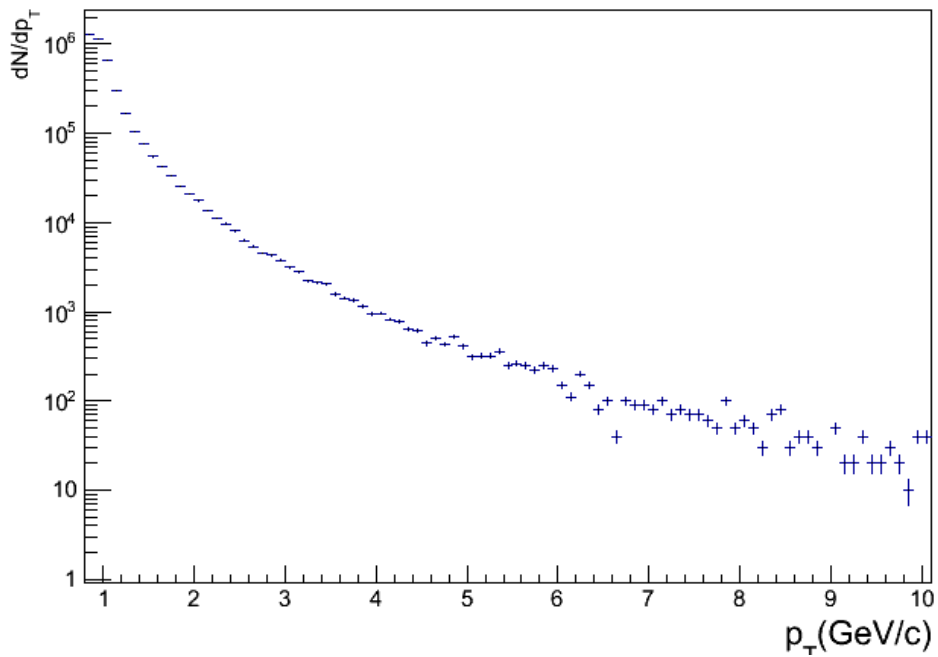


Raw Electron yields

Central trigger (uncorrected background)

- Uncorrected background hadron correction

Inc. electron in Central trigger



- (action) subtracting background
- (action) compare with cluster energy distribution

- shower shape
- track matching
- Occupancy
- phi and eta dependence of PID (E/p , dE/dx)
- Increase statistics to see electrons in EMCal trigger

presentations

- [EMCal 0301](#)
- [HFE emcal 0228](#)

-- /Users/shingo/WRK/Dayana/2012/02/23
-- /u/shingo/WRK_eliza8/2012/01/22/LHC11h

-- ShingoSakai - 22-Feb-2012

This topic: [Main > 02222012FirstLookedAtLHC11hPass2](#)
Topic revision: r15 - 2014-06-09 - ShingoSakai



Copyright &© 2008-2020 by the contributing authors. All material on this collaboration platform is the property of the contributing authors.
Ideas, requests, problems regarding TWiki? Send feedback