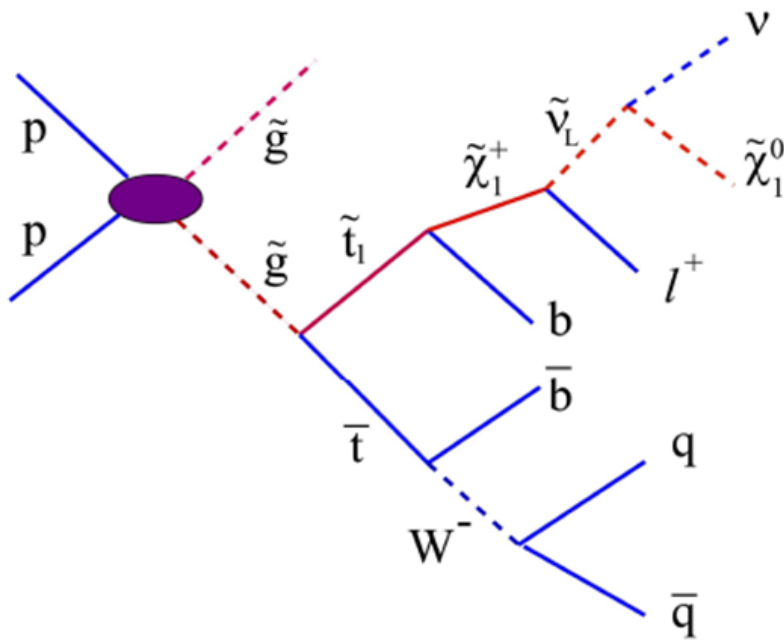


$$\tilde{g} \rightarrow \tilde{t}_1 \bar{t} \quad \bar{t} \rightarrow \bar{b} W \rightarrow b q \bar{q}' \quad \tilde{t}_1 \rightarrow b \tilde{\chi}_1^+ \rightarrow b \ell^+ + E_{\text{miss}}$$



LM: $m_{1/2} = 250 \text{ GeV}/c^2$, $m_0 = 60 \text{ GeV}/c^2$, $A_0 = 0$, $\tan\beta = 10$, $\mu(\text{sign}) = +$

cross_section-tot (gluino) = 49.66pb, BR = 3%
 Scalar top quark: $m > 95,7 \text{ GeV}$ CL = 95% (PDG 2006)

M̄UGRA Test Points for CMS:

http://cmsdoc.cern.ch/cms/PRS/susybsm/m̄ugra_testpts/m̄ugra_testpts.html

This topic: M̄ai n > HUSUSYSi gnal

Topic revision: r1 - 2009-06-23 - AnitaKapusi



Copyright © 2008-2019 by the contributing authors. All material on this collaboration platform is the property of the contributing authors.

Ideas, requests, problems regarding TWiki? Send feedback