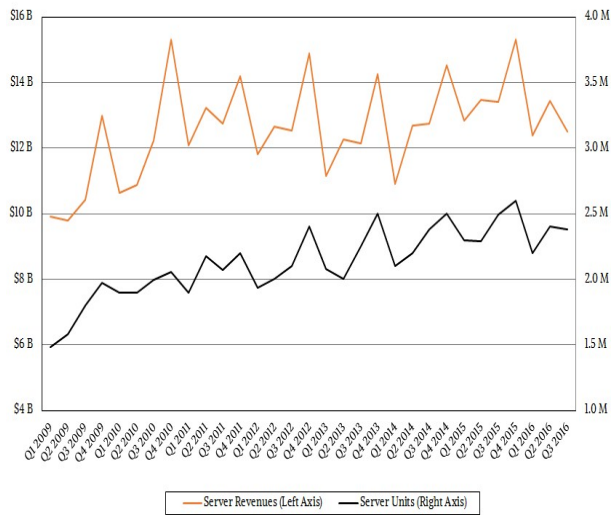


Server M < Main < TW ki

The market for compute servers has stabilized during the last years in terms of unit shipment and revenues.

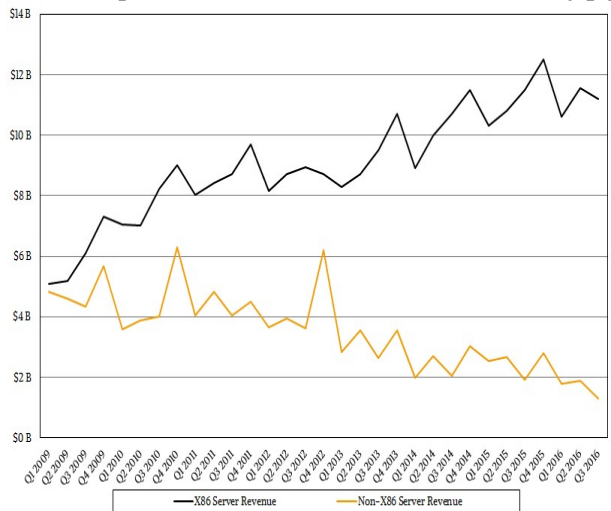
<https://www.nextplatform.com/2016/12/02/server-slowdown-increasing-efficiency/>

* idc-q3-2016-server-rev-ships.jpg:



The clear trend of a dominating X86 basis has further increased. Neither IBM with it's POWER processors nor the several attempts by the ARM community were successful which can be seen clearly in the following plot:

* idc-q3-2016-server-x86-others.jpg:



This topic: Main > Server M

Topic revision: r2 - 2017-01-29 - BerndPanzerSteindel



Copyright &© 2008-2019 by the contributing authors. All material on this collaboration platform is the property of the contributing authors.

Ideas, requests, problems regarding TWiki? Send feedback