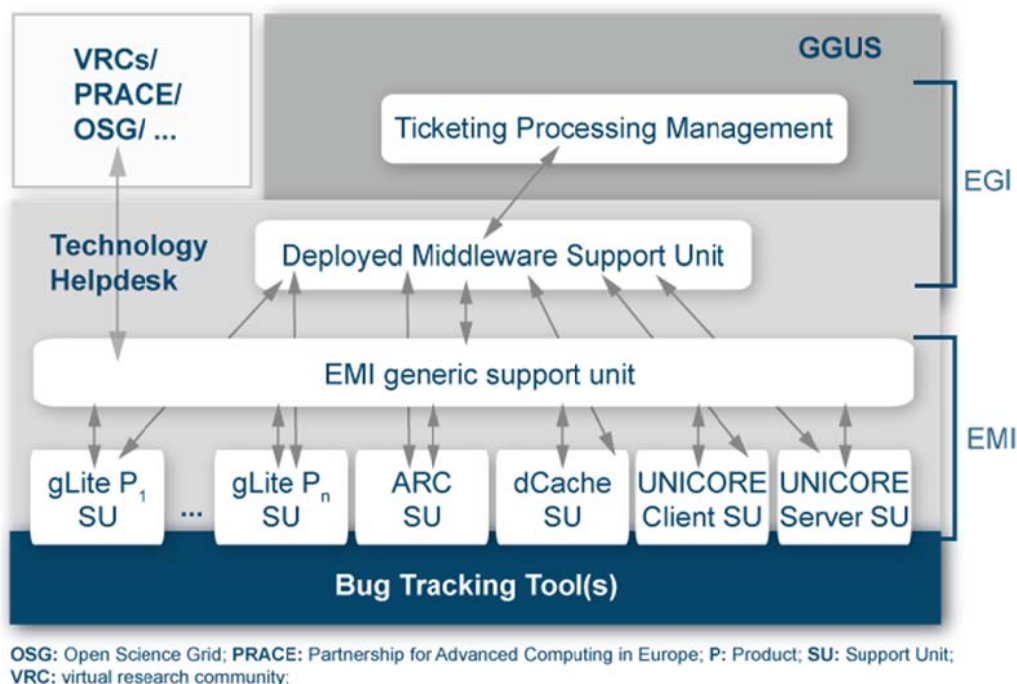


## EMI User Support

### “how to” guide for supporters

#### 1. General information:

- EMI is providing third level support for all EMI components; first and second level support is dealt with by the infrastructures running EMI:



- The tracking system used is the technology helpdesk provided by GGUS (<https://ggus.eu/tech/dashboard.php>)
- Support units (SU) have been set up by the support teams for EMI products or components. Support units are described in FAQs, which are available at [https://wiki.egi.eu/wiki/Category:FAQ\\_Responsible\\_Units\\_%28GGUS%29](https://wiki.egi.eu/wiki/Category:FAQ_Responsible_Units_%28GGUS%29)
- Supporters are notified about changes to tickets in their SU by e-mail.
- Supporters are reminded about open tickets in their SU twice a week.

#### 2. A ticket has been **assigned** to the SU I am in charge of, how do I proceed?

- The link to the ticket is contained in the notification e-mail you have received. Use it to access the detailed information in the ticket.
- Does the problem described has been correctly assigned to your SU; make some tests to ensure this. If it does not belong to your SU then assign it to a more appropriate SU of the EMI level or back to DMSU otherwise set its status to “in progress”, which means you have accepted the ticket.

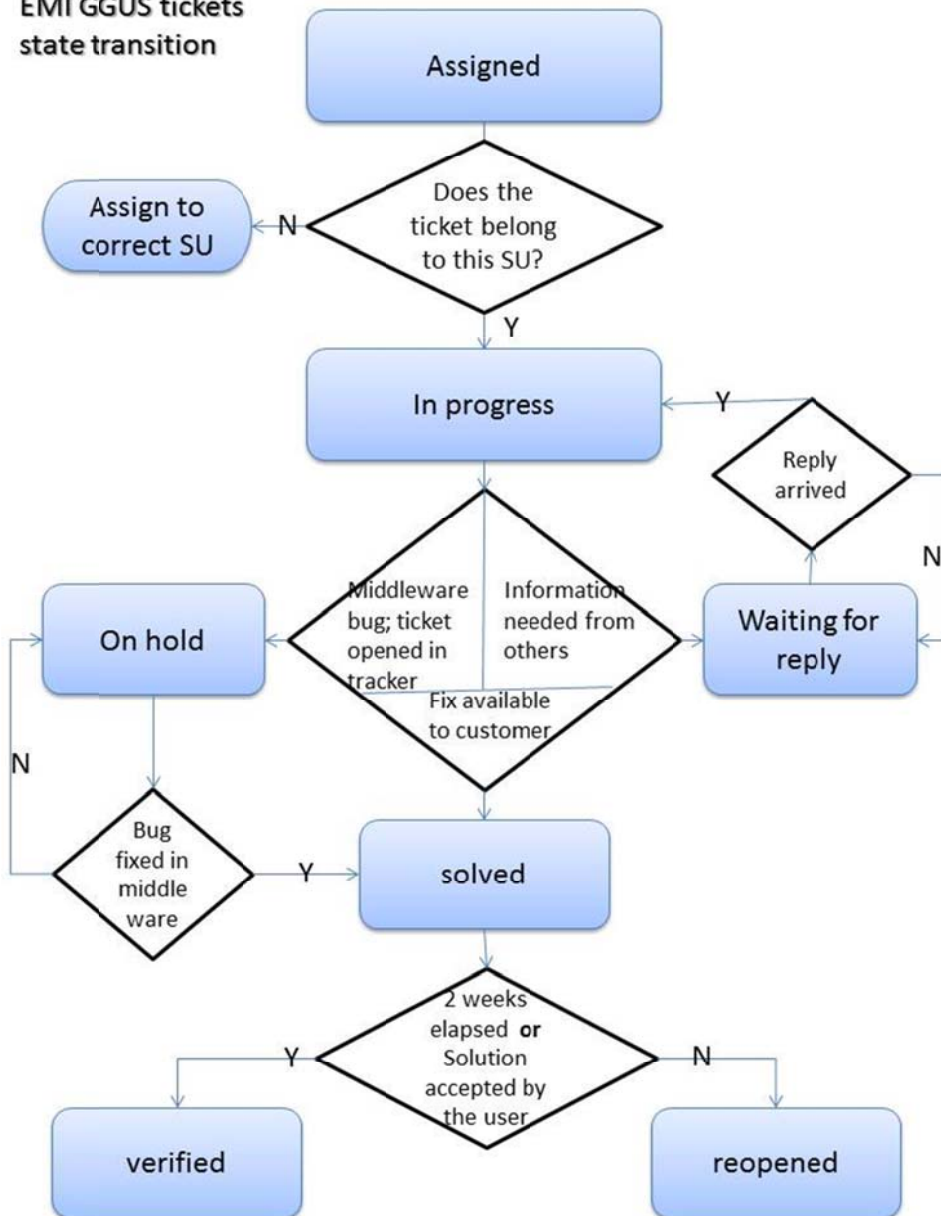
Make sure you react in the timespan EMI has defined per ticket priority in the SLA with its customers:

on work days (9 am to 5 pm, in the time zone of the supporter)

- < 4 hours for top priority (severity 1; critical system impact)
- < 2 days for very urgent (severity 2; major system impact)
- < 5 days for urgent (severity 3; moderate system impact)
- < 15 days for less urgent (severity 4; minor problem)

- c. Check the priority setting of the ticket. Has it been set appropriately? If not, please set the appropriate priority to the ticket. The detailed definition for the priorities can be taken from pages 31-32 in [http://cdsweb.cern.ch/record/1277517/files/EMI-DNA1.2.1-1277517-SLA\\_Template-v1.0.pdf](http://cdsweb.cern.ch/record/1277517/files/EMI-DNA1.2.1-1277517-SLA_Template-v1.0.pdf). In brief they are:
- i. top priority: service interrupted; needs to be addressed as soon as possible
  - ii. very urgent: service degraded; no work-around available
  - iii. urgent: service degraded; work-around available
  - iv. less urgent: wishes and enhancements that are "nice to have"

**EMI GGUS tickets state transition**



3. A ticket is in status **in progress**, how do I proceed?
- a. Try to reproduce the problem described in the ticket. Test whether it is a software bug, a configuration problem, a documentation problem, etc.
  - b. In case of a software bug or other reasons which have to be dealt with by the software developers, open a ticket in the respective bug or feature tracker and fill in the GGUS

ticket URL to that ticket. Add the URL of the newly created ticket in the bug tracker to the GGUS ticket (“related issue” field). Set the status of the GGUS ticket to “on hold”.

4. I need additional information from the ticket originator about the problem, what do I do?
  - a. Add the question to the ticket (public diary) and set the ticket status to “**waiting for reply**”.
5. What to do with tickets of status **on hold**?
  - a. Such a ticket corresponds to a ticket in a middleware’s tracking system. Check the progress of that ticket in the middleware’s tracking system. In case it is not worked on talk to the developers and ask for a solution or when a solution can be expected (with respect to ticket priority)
  - b. Add information on progress to the ticket’s public comment when appropriate to keep the ticket’s submitter up to date.
6. When can a ticket’s status be changed to **solved**?
  - a. When a solution to the problem has been found and tested by the supporters, the solution is added to the ticket (open the solution field by clicking on “Click here to insert solution” below the public diary) and the status can be changed to “solved”.
  - b. The originator of the ticket is expected to test the provided solution and either reopen the ticket, if the solution doesn’t work for him/her, or set the status to “verified”.
7. I have found a workaround, can I set the ticket’s status to “solved”?
  - a. If a workaround exists it only influences the ticket’s priority which can be degraded accordingly.
8. I get Reminder e-mails for open tickets twice per week, what should I do with them?
  - a. These e-mails remind you of tickets in your SU which are in one of the open states. The colour scheme indicates the urgency – it is a combination of priority and time since last update. The colour is set as described in [https://ggus.eu/pages/ggus-docs/PDF/1150\\_FAQ\\_for\\_priority\\_colour.pdf](https://ggus.eu/pages/ggus-docs/PDF/1150_FAQ_for_priority_colour.pdf)
  - b. Please check all of the tickets and try to solve them.
9. Why is it important to find solutions to reported problem?
  - a. It helps to increase customer satisfaction.
  - b. It helps to fulfill the Service Level Agreements with EMI’s customers.
  - c. It affects the EMI key performance indicator “average time to solution” which is calculated for each SU in EMI which shows the SU’s performance.