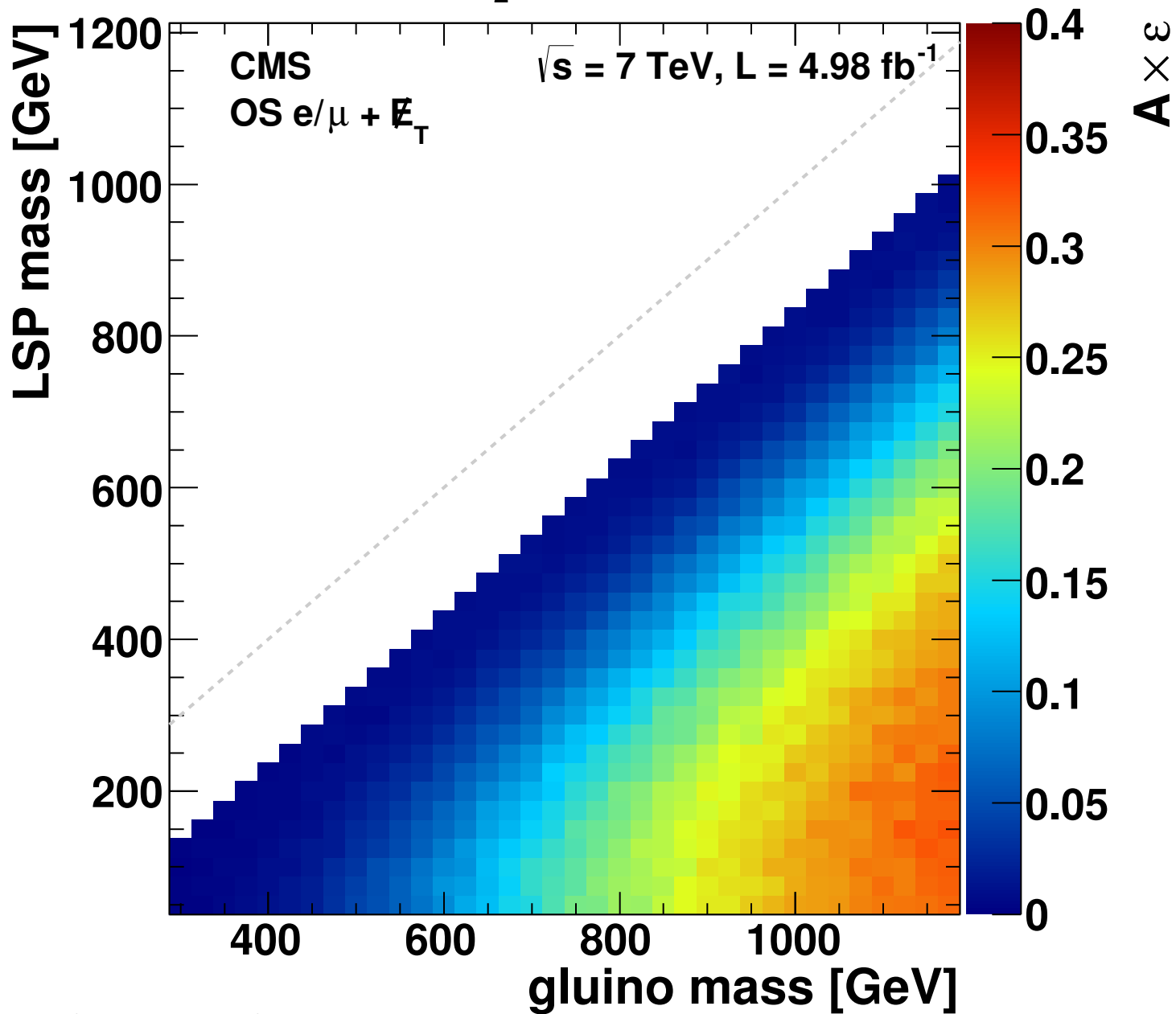


$pp \rightarrow \tilde{g} \tilde{g} \rightarrow q\bar{q} (\tilde{\chi}_2^0 \rightarrow \Gamma^+ \Gamma^- \tilde{\chi}^0); m(\tilde{q}) \gg m(\tilde{g})$



$$m(\tilde{\chi}_2^0) = 0.5 m(\tilde{\chi}^0) + 0.5 m(\tilde{g})$$