

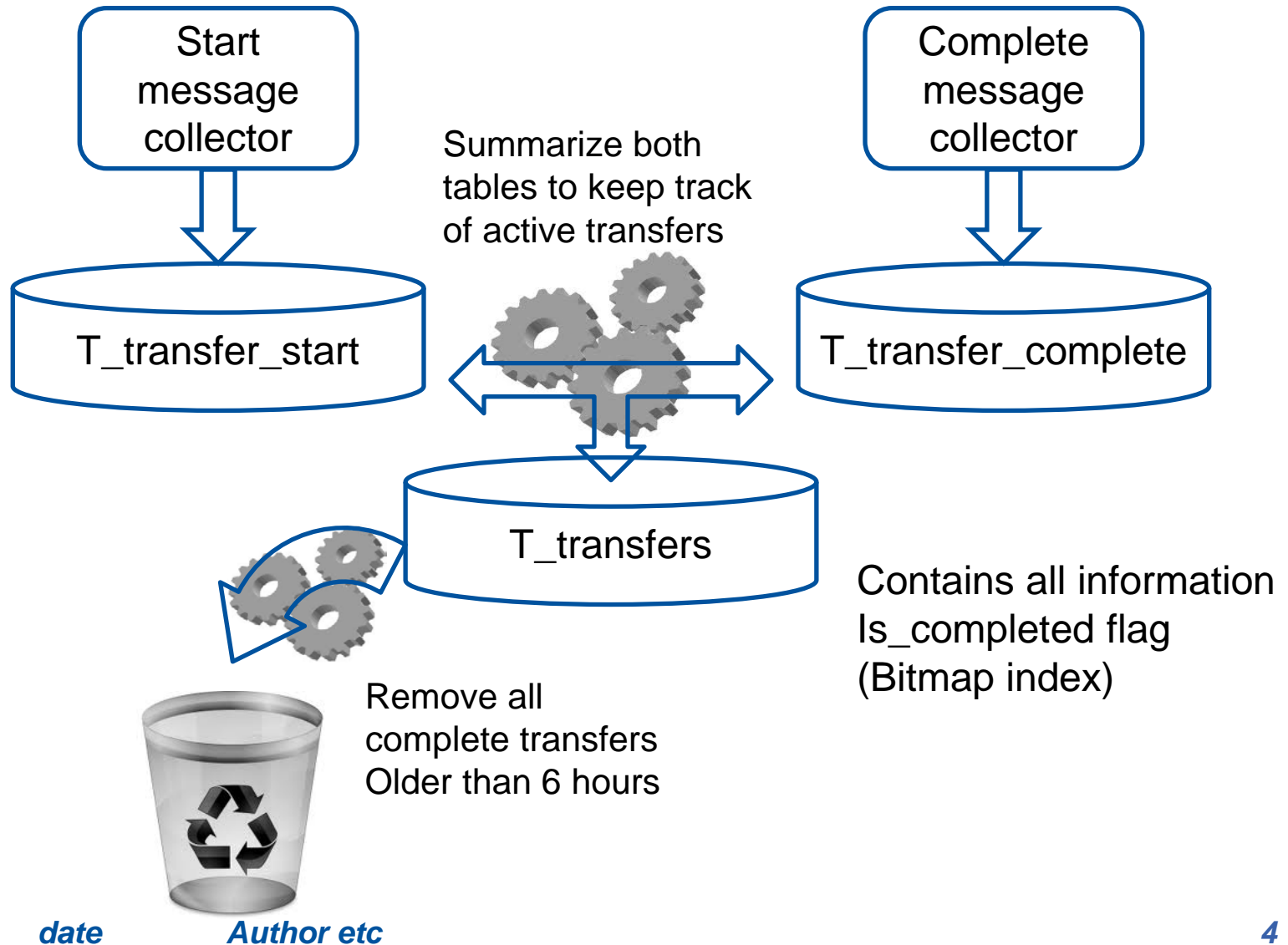


Progress on latency monitoring in the WLCG transfer Dashboard

Alexandre Beche

- Reminder of the ongoing tasks
- Current DB and Xbrowse status
- Historical data for active transfers
- Demo
- Future

- Active Transfers monitoring:
 - Work with Daniel on the DB
 - Work with David on xbrowse
- Beyond “ATM”: historical data
 - Plot suggested by Josep Flix for CMS:
 - Channel occupancy
 - Througput / Streams
 - SRM overhead

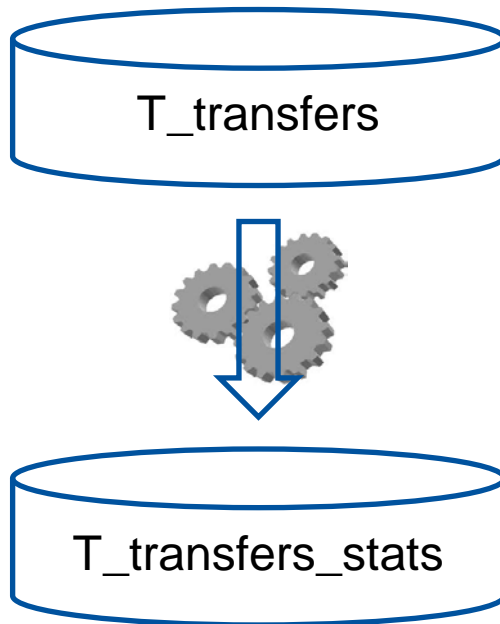


- Add a plugin to create normalized plots
 - Standard way to create plots
- Similar plugin for dataTable handling
- Autocomplete control:
 - Initially used for channel filtering
 - Will be used for server



- New statistics table required
 - T_transfers_stats

Statistics generation similar to existing one



Filtering fields (PK)

Src_site, dst_site

Src_host, dst_host

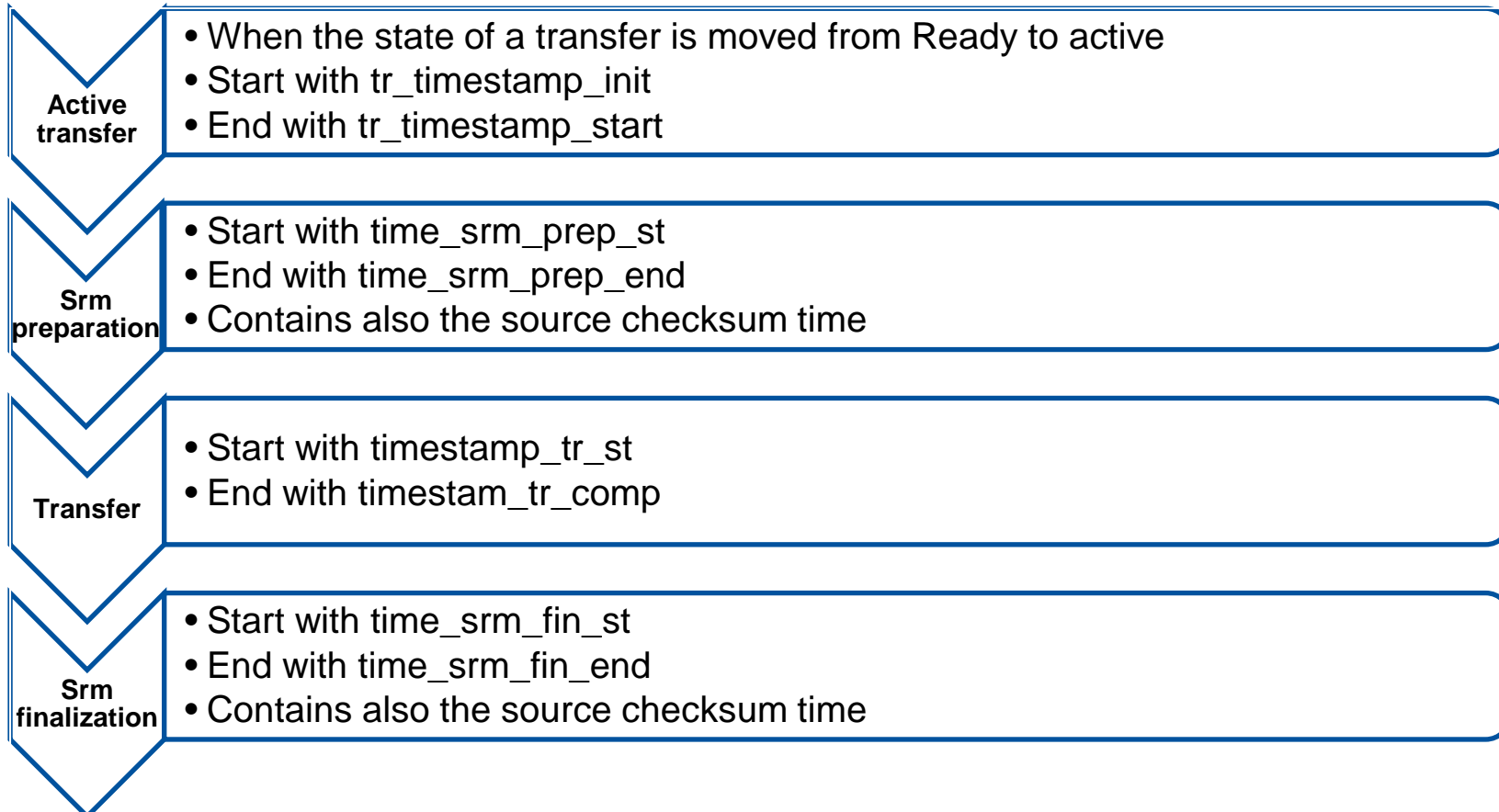
VO,

Channel,

Period end time

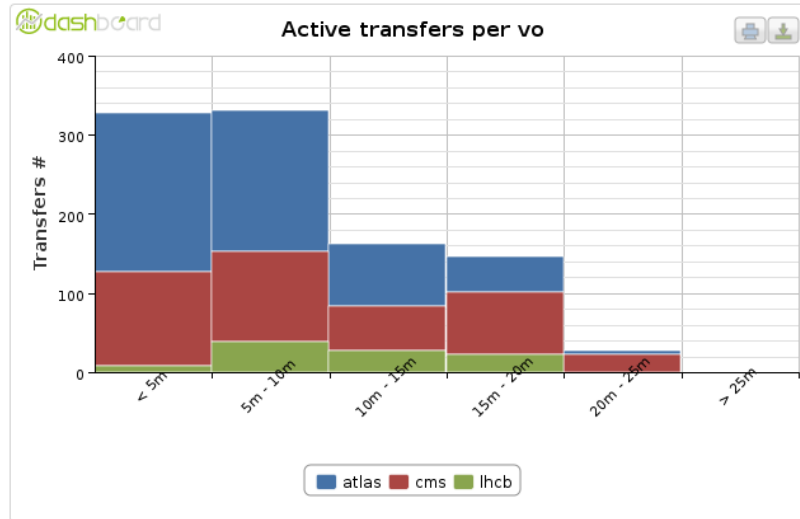
Is space token and server required?

- Number of Actives / number of transfers
- Statistics on time spent on each phases (srm overhead)

*date**Author etc*



Callback can be registered on plot DataTable can be customized by the end user



- FIELDS: Basic Extended
- Source country
 - Source site
 - Source host
 - Source token
 - Source URL
 - Destination country
 - Destination site
 - Destination host
 - Destination token
 - Destination URL
 - Transfer ID
 - VO
 - Server
 - Channel
 - Started time
 - Elapsed time

Search:

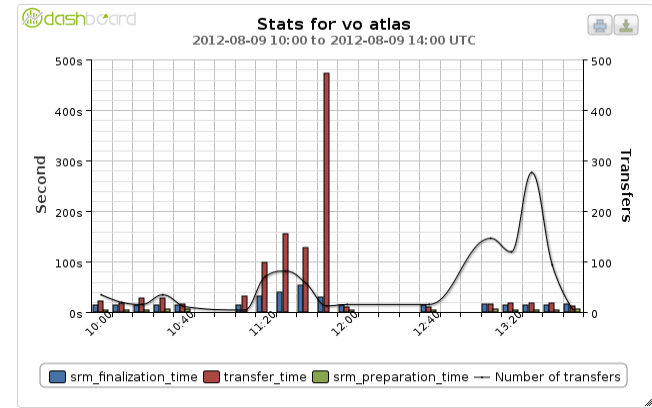
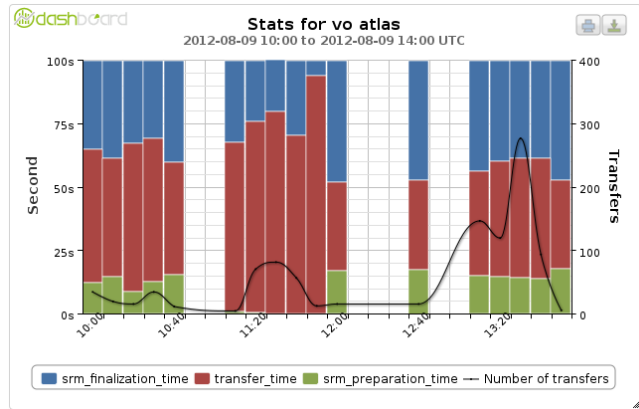
| vo | t_channel | elapsed_second |
|-----|-----------|----------------|
| cms | FNAL-CERN | 226.554925 |
| cms | FNAL-CERN | 225.554925 |
| cms | STAR-CNAF | 243.554925 |
| cms | FNAL-CERN | 226.554925 |
| cms | FNAL-CERN | 226.554925 |
| cms | STAR-CNAF | 230.554925 |
| cms | FNAL-CERN | 226.554925 |

| transfer_id | src_country | src_host | dst_country | dst_host | vo | t_channel | elapsed_second |
|---|-------------|-----------------|-------------|-------------------|-----|---------------|----------------|
| fe689e72-e557-11e1-bcec-db9a49b19ff6FNAL-CERN__2012-08-13-1503_aBxEFa | USA | cmssrm.fnal.gov | n/a | eoscmsftp.cern.ch | cms | FNAL-CERN | 226.554925 |
| e912e387-e557-11e1-b32d-96c0dcdf560KNU-IN2P3__2012-08-13-1502_SBxcqQ | | | | | cms | KNU-IN2P3 | 264.554925 |
| fcbb8ac5-e557-11e1-b637-9922f08a4b9bIN2P3-CMSSLOW__2012-08-13-1503_FK164s | | | | | cms | IN2P3-CMSSLOW | 228.554925 |
| fe689e72-e557-11e1-bcec-db9a49b19ff6FNAL-CERN__2012-08-13-1503_BapFPK | | | | | cms | FNAL-CERN | 227.554925 |
| c2f90333-e557-11e1-bf8f-f6089b20e912CERN-FNAL__2012-08-13-1503_PshUb1_7 | | | | | cms | CERN-FNAL | 226.554925 |
| fe689e72-e557-11e1-bcec-db9a49b19ff6FNAL-CERN__2012-08-13-1503_HQ5ZKq | | | | | cms | FNAL-CERN | 227.554925 |
| fe689e72-e557-11e1-bcec-db9a49b19ff6FNAL-CERN__2012-08-13-1503_anRhV6 | | | | | cms | FNAL-CERN | 227.554925 |

Showing 1 to 25 of 93 entries

First Previous 1 2 3 4 Next Last

Style does not modify the data: visualization option Common to the whole application



STYLE ▾

Basic

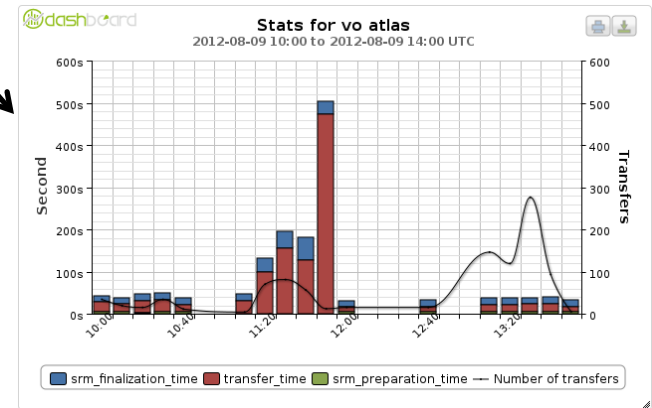
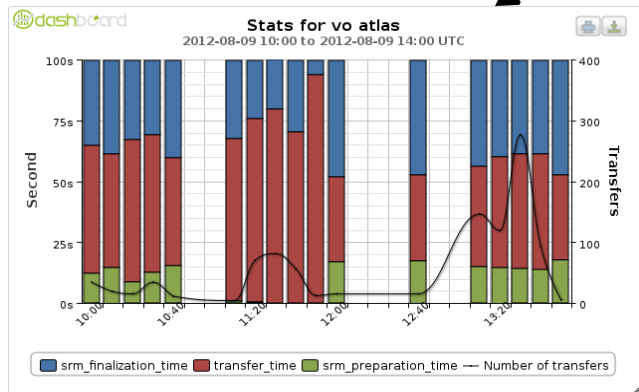
Outline

Column:

Distinct

Stacked

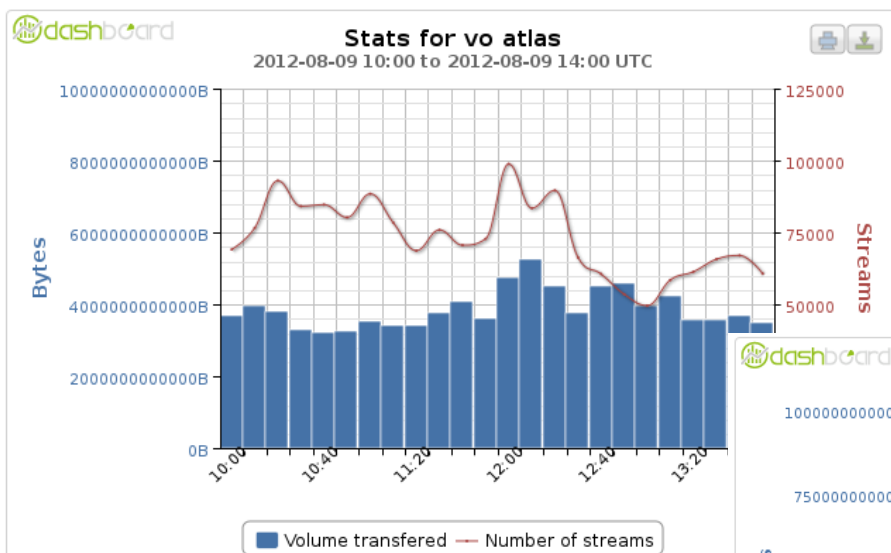
Percent



date

Author etc

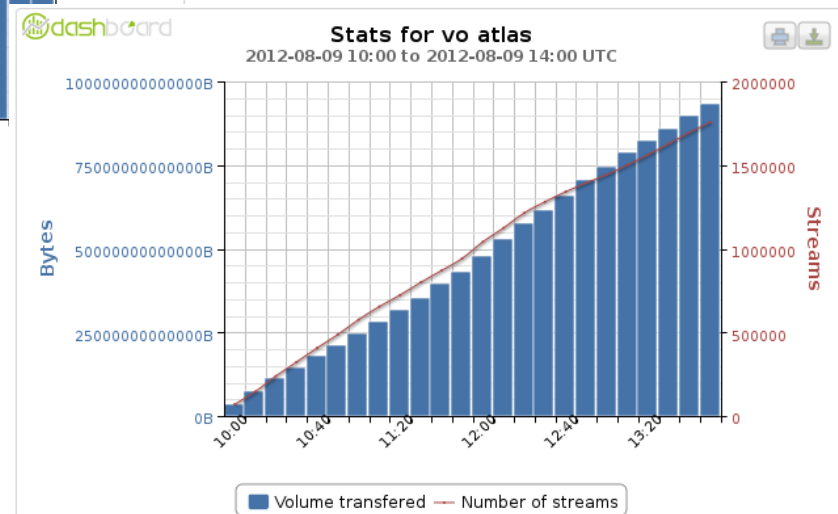
Type modify the data themselves
Common to the whole application (when possible)



TYPE ▾

Standard

Cumulative



- Meet the experiments to “close” the first round of requirements and ask the future
- Deployment of the application in the integration server



Thanks for your attention