

First bead-pull measurements LINAC4 DTL prototype

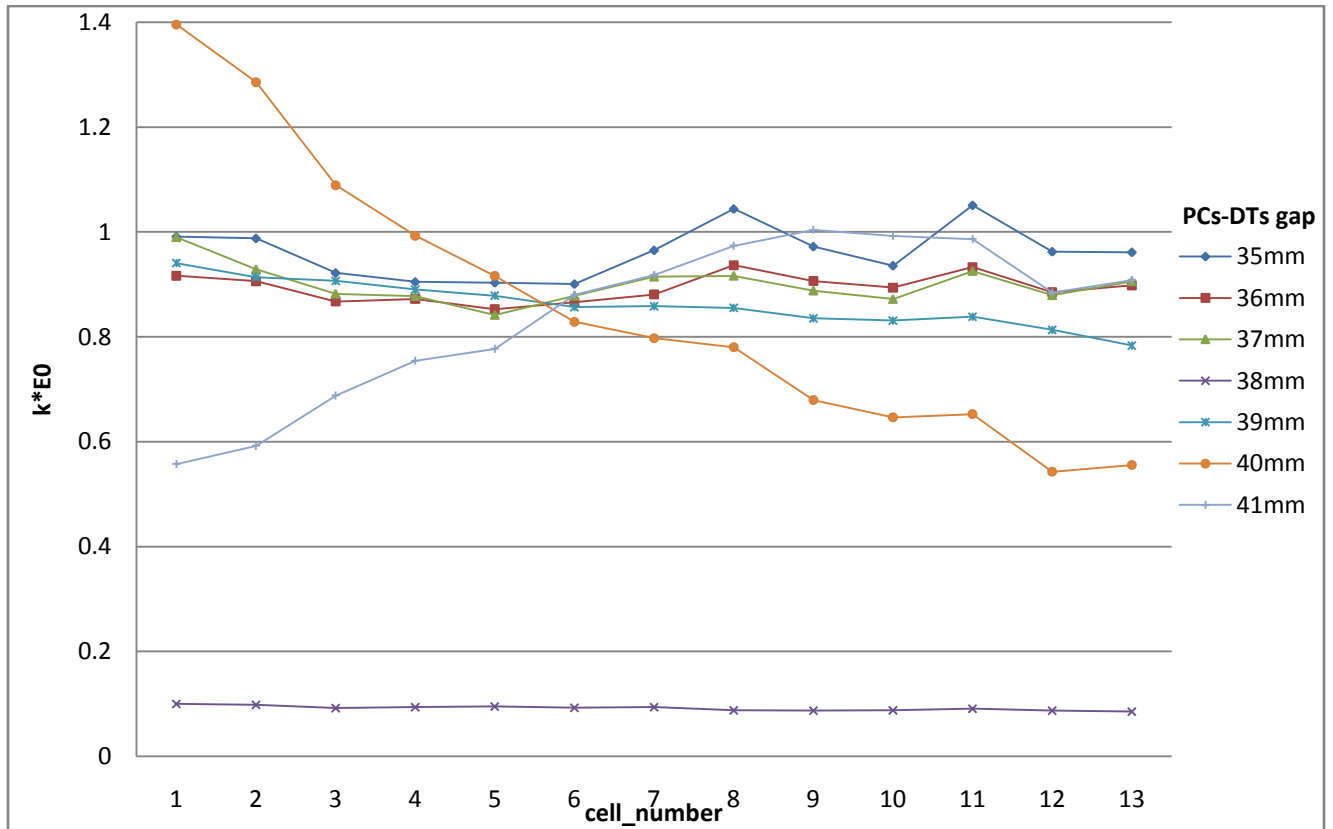


Figure 1: Average field flatness at different PCs length

Measurements conditions: tuners inserted; end-cells at the nominal positions

(Please NOTE other details on

<https://twiki.cern.ch/twiki/bin/view/SPL/DriftTubeLinac/PrototypeMeasurements>)